

For Research Use Only

Chitinase 3-like 1/CHI3L1 Recombinant monoclonal antibody, PBS Only (Detector)



Catalog Number: 83685-5-PBS

Basic Information

Catalog Number: 83685-5-PBS	GenBank Accession Number: NM_001276.4	Purification Method: Protein A purification
Source: Rabbit	GeneID (NCBI): 1116	CloneNo.: 253193B1
Isotype: IgG	UNIPROT ID: P36222	
Immunogen Catalog Number: EG4992	Full Name: chitinase 3-like 1 (cartilage glycoprotein-39)	
	Calculated MW: 43 kDa	

Applications

Tested Applications:
Cytometric bead array, Indirect ELISA

Species Specificity:
human

Background Information

Storage

Storage:
Store at -80°C.
The product is shipped with ice packs. Upon receipt, store it immediately at -80°C

Storage Buffer:
PBS only, pH7.3

For technical support and original validation data for this product please contact:

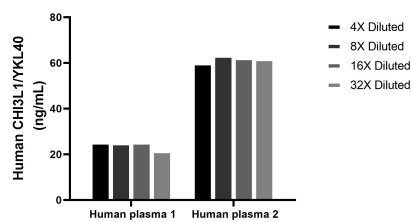
T: 4006900926

E: Proteintech-CN@ptglab.com

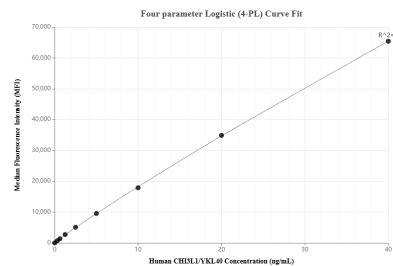
W: ptgcn.com

This product is exclusively available under Proteintech Group brand and is not available to purchase from any other manufacturer.

Selected Validation Data



The mean CHI3L1/YKL40 concentration was determined to be 24.2 ng/mL in human plasma 1, 61.8 ng/mL in human plasma 2.



Cytometric bead array standard curve of MP00663-4, CHI3L1/YKL40 Recombinant Matched Antibody Pair, PBS Only. Capture antibody: 83685-6-PBS. Detection antibody: 83685-5-PBS. Standard: Eg4992. Range: 0.312-40 ng/mL.