

For Research Use Only

CHI3L1/YKL40 Recombinant antibody, PBS Only

Catalog Number: 83685-4-PBS



Basic Information

Catalog Number:

83685-4-PBS

Concentration:

1 mg/ml

Source:

Rabbit

Isotype:

IgG

Immunogen Catalog Number:

AG33123

GenBank Accession Number:

BC008568

GeneID (NCBI):

1116

UNIPROT ID:

P36222

Full Name:

chitinase 3-like 1 (cartilage
glycoprotein-39)

Calculated MW:

383 aa, 43 kDa

Observed MW:

40-43 kDa

Purification Method:

Protein A purification

CloneNo.:

240691F11

Applications

Tested Applications:

WB, IHC, IF/ICC, FC (Intra), ELISA

Species Specificity:

human

Background Information

Chitinase 3-like-1 (CHI3L1/YKL-40/CGP-39/GP-39/hCGP-39) is a protein secreted from restricted cell types including colonic epithelial cells (CECs) and macrophages. CHI3L1 is an inflammation-associated molecule, and its expression is enhanced in persons with colitis and colon cancer. CHI3L1 is a 40 kDa protein and is produced by restricted cell types, including colonic epithelial cells (CECs) and macrophages. CHI3L1 can be detected in the Golgi apparatus and the endoplasmic reticulum, but its major sites of action seems to be extracellular as a secreted protein. (PMID:21763261)

Storage

Storage:

Store at -80°C.

The product is shipped with ice packs. Upon receipt, store it immediately at -80°C

Storage Buffer:

PBS Only

For technical support and original validation data for this product please contact:

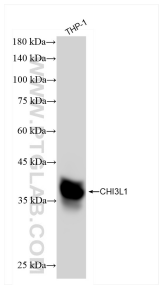
T: 4006900926

E: Proteintech-CN@ptglab.com

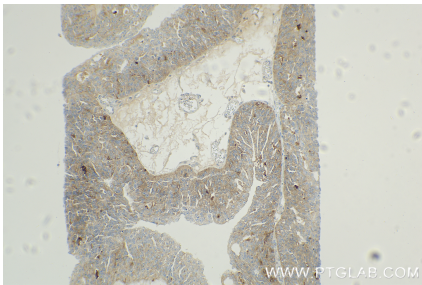
W: ptgcn.com

This product is exclusively available under Proteintech Group brand and is not available to purchase from any other manufacturer.

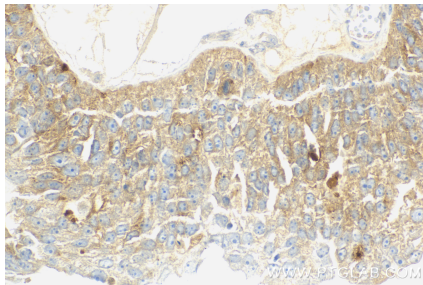
Selected Validation Data



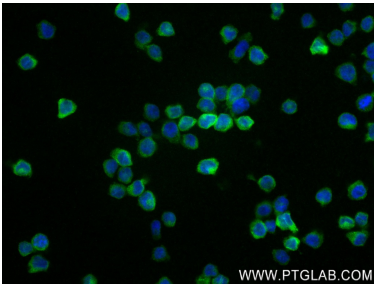
THP-1 cells were subjected to SDS PAGE followed by western blot with 83685-4-RR (CHI3L1 antibody) at dilution of 1:5000 incubated at room temperature for 1.5 hours. This data was developed using the same antibody clone with 83685-4-PBS in a different storage buffer formulation.



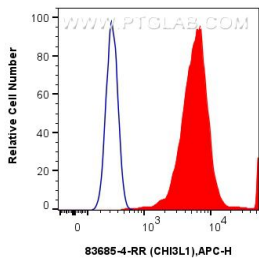
Immunohistochemical analysis of paraffin-embedded human ovary cancer tissue slide using 83685-4-RR (CHI3L1/YKL40 antibody) at dilution of 1:400 (under 10x lens). Heat mediated antigen retrieval with Tris-EDTA buffer (pH 9.0). This data was developed using the same antibody clone with 83685-4-PBS in a different storage buffer formulation.



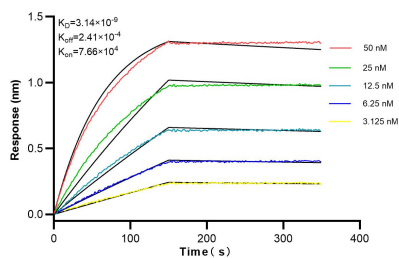
Immunohistochemical analysis of paraffin-embedded human ovary cancer tissue slide using 83685-4-RR (CHI3L1/YKL40 antibody) at dilution of 1:400 (under 40x lens). Heat mediated antigen retrieval with Tris-EDTA buffer (pH 9.0). This data was developed using the same antibody clone with 83685-4-PBS in a different storage buffer formulation.



Immunofluorescent analysis of (4% PFA) fixed THP-1 cells using CHI3L1 antibody (83685-4-RR, Clone: 240691F11) at dilution of 1:250 and CoraLite®488-Conjugated AffiniPure Goat Anti-Rabbit IgG(H+L) (SA00013-2). This data was developed using the same antibody clone with 83685-4-PBS in a different storage buffer formulation.



1x10⁶ THP-1 cells were intracellularly stained with 0.25 ug CHI3L1 Recombinant antibody (83685-4-RR, Clone:240691F11) and APC-Conjugated AffiniPure Goat Anti-Rabbit IgG(H+L)(red), or 0.25 ug Isotype Control (blue). Cells were fixed with 4% PFA and permeabilized with Flow Cytometry Perm Buffer (PF00011-C). This data was developed using the same antibody clone with 83685-4-PBS in a different storage buffer formulation.



Bi-layer interferometry (BLI) kinetic assays of 83685-4-RR against Human CHI3L1 were performed. The affinity constant is 3.14 nM.