

For Research Use Only

Beta-2-Microglobulin Recombinant antibody, PBS Only (Detector)

Catalog Number: 83683-5-PBS



Basic Information

Catalog Number:

83683-5-PBS

Concentration:

1 mg/ml

Source:

Rabbit

Isotype:

IgG

Immunogen Catalog Number:

AG4433

GenBank Accession Number:

BC032589

GeneID (NCBI):

567

ENSEMBL Gene ID:

ENSG00000166710

UNIPROT ID:

P61769

Full Name:

beta-2-microglobulin

Calculated MW:

119 aa, 14 kDa

Purification Method:

Protein A purification

CloneNo.:

240660B3

Applications

Tested Applications:

Sandwich ELISA, Indirect ELISA, Sample test

Species Specificity:

human

Background Information

Storage

Storage:

Store at -80°C.

The product is shipped with ice packs. Upon receipt, store it immediately at -80°C

Storage Buffer:

PBS Only

For technical support and original validation data for this product please contact:

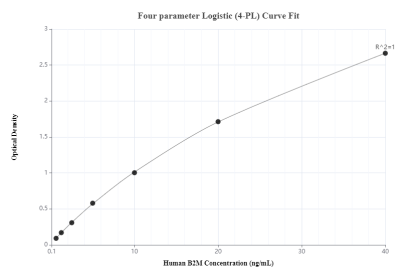
T: 4006900926

E: Proteintech-CN@ptglab.com

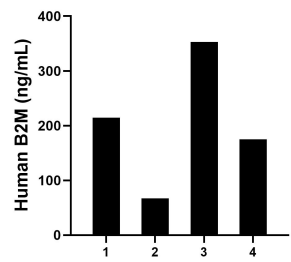
W: ptgcn.com

This product is exclusively available under Proteintech Group brand and is not available to purchase from any other manufacturer.

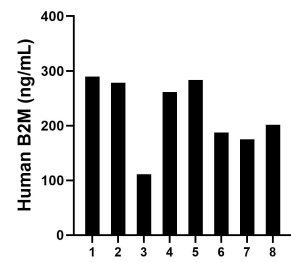
Selected Validation Data



Sandwich ELISA standard curve of MP00673-3, human B2M Recombinant Matched Antibody Pair - PBS only. 83683-1-PBS was coated to a plate as the capture antibody and incubated with serial dilutions of standard Ag4433. 83683-5-PBS was HRP conjugated as the detection antibody. Range: 0.625-40 ng/mL



Urine of eight individual healthy human donors was measured. The B2M concentration of detected samples was determined to be 202.46 ng/mL with a range of 67.46-352.77 ng/mL



Serum of eight individual healthy human donors was measured. The B2M concentration of detected samples was determined to be 223.48 ng/mL with a range of 111.44-289.89 ng/mL