

For Research Use Only

# B2M Recombinant antibody, PBS Only (Detector)

Catalog Number: 83683-10-PBS



## Basic Information

Catalog Number:

83683-10-PBS

Concentration:

1 mg/ml

Source:

Rabbit

Isotype:

IgG

GenBank Accession Number:

BC032589

GeneID (NCBI):

567

ENSEMBL Gene ID:

ENSG00000166710

UNIPROT ID:

P61769

Full Name:

beta-2-microglobulin

Calculated MW:

119 aa, 14 kDa

Purification Method:

Protein A purification

CloneNo.:

241309E12

## Applications

Tested Applications:

Sandwich ELISA, Indirect ELISA, Sample test

Species Specificity:

human

## Background Information

### Storage

Storage:

Store at -80°C.

The product is shipped with ice packs. Upon receipt, store it immediately at -80°C

Storage Buffer:

PBS Only

For technical support and original validation data for this product please contact:

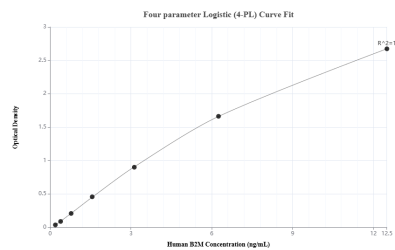
T: 4006900926

E: [Proteintech-CN@ptglab.com](mailto:Proteintech-CN@ptglab.com)

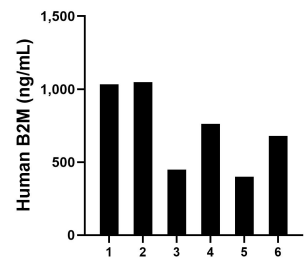
W: [ptgcn.com](http://ptgcn.com)

This product is exclusively available under Proteintech Group brand and is not available to purchase from any other manufacturer.

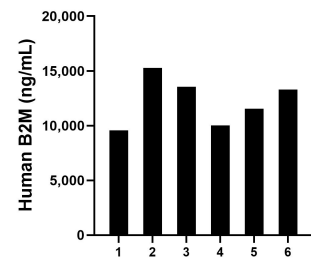
## Selected Validation Data



Sandwich ELISA standard curve of MP00673-4, Human B2M Recombinant Matched Antibody Pair - PBS only. 83683-11-PBS was coated to a plate as the capture antibody and incubated with serial dilutions of standard Eg2284. 83683-10-PBS was HRP conjugated as the detection antibody. Range: 0.195-12.5 ng/mL



Urine of six individual healthy human donors was measured. The human B2M concentration of detected samples was determined to be 728.33 ng/mL with a range of 399.66 - 1,048.75 ng/mL



Serum of six individual healthy human donors was measured. The human B2M concentration of detected samples was determined to be 12,201.96 ng/mL with a range of 9,574.44 - 15,258.19 ng/mL