

For Research Use Only

# PBRM1 Recombinant antibody, PBS Only (Detector)

Catalog Number: 83677-3-PBS



## Basic Information

Catalog Number:

83677-3-PBS

Size:

1 mg/ml

Source:

Rabbit

Isotype:

IgG

Immunogen Catalog Number:

AG33623

GenBank Accession Number:

BC015323

GeneID (NCBI):

55193

UNIPROT ID:

Q86U86

Full Name:

polybromo 1

Calculated MW:

180 kDa

Purification Method:

Protein A purification

CloneNo.:

240655F6

## Applications

Tested Applications:

Cytometric bead array, Sandwich ELISA, Indirect ELISA, Sample test

Species Specificity:

human

## Background Information

### Storage

Storage:

Store at -80°C.

**The product is shipped with ice packs. Upon receipt, store it immediately at -80°C**

Storage Buffer:

PBS Only

For technical support and original validation data for this product please contact:

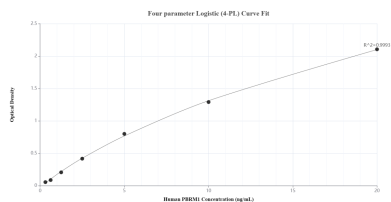
T: 4006900926

E: [Proteintech-CN@ptglab.com](mailto:Proteintech-CN@ptglab.com)

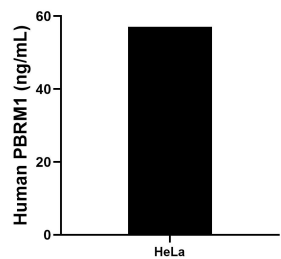
W: [ptgcn.com](http://ptgcn.com)

**This product is exclusively available under Proteintech Group brand and is not available to purchase from any other manufacturer.**

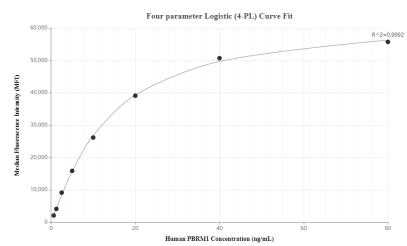
## Selected Validation Data



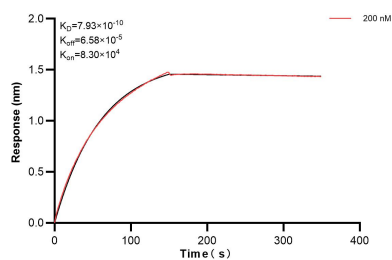
Sandwich ELISA standard curve of MP00656-4, Human PBRM1 Recombinant Matched Antibody Pair - PBS only. 83677-6-PBS was coated to a plate as the capture antibody and incubated with serial dilutions of standard Ag33623. 83677-3-PBS was HRP conjugated as the detection antibody. Range: 0.312-20 ng/mL.



The mean PBRM1 concentration was determined to be 57.09 ng/mL in HeLa cell extract based on a 2.00 mg/mL extract load.



Cytometric bead array standard curve of MP00656-3, PBRM1 Recombinant Matched Antibody Pair, PBS Only. Capture antibody: 83677-2-PBS. Detection antibody: 83677-3-PBS. Standard: Ag33623. Range: 0.625-80 ng/mL.



Biolayer interferometry (BLI) kinetic assay of 83677-3-PBS against Human PBRM1 was performed. The affinity constant is 0.793 nM.