

For Research Use Only

PBRM1 Recombinant antibody, PBS Only (Capture)

Catalog Number: 83677-2-PBS



Basic Information

Catalog Number:

83677-2-PBS

Size:

1 mg/ml

Source:

Rabbit

Isotype:

IgG

Immunogen Catalog Number:

AG33623

GenBank Accession Number:

BC015323

GeneID (NCBI):

55193

UNIPROT ID:

Q86U86

Full Name:

polybromo 1

Calculated MW:

180 kDa

Observed MW:

180-195 kDa

Purification Method:

Protein A purification

CloneNo.:

240655H5

Applications

Tested Applications:

WB, IF/ICC, Cytometric bead array, Indirect ELISA

Species Specificity:

human, mouse

Background Information

PBRM1, also named hPB1 BAF180 and Polybromo-1D, acts as a negative regulator of cell proliferation. PBRM1 is the second major mutated clear cell RCC cancer gene after VHL. PBRM1 loss is associated with low grade features.

Storage

Storage:

Store at -80°C.

The product is shipped with ice packs. Upon receipt, store it immediately at -80°C

Storage Buffer:

PBS Only

For technical support and original validation data for this product please contact:

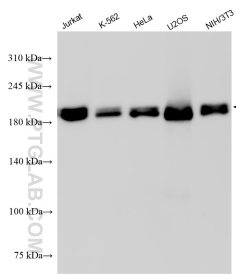
T: 4006900926

E: Proteintech-CN@ptglab.com

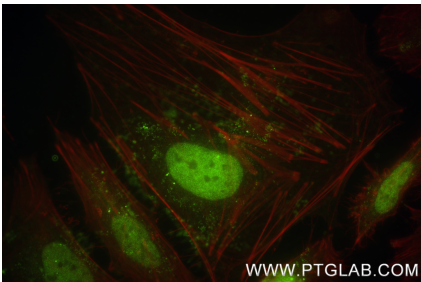
W: ptgcn.com

This product is exclusively available under Proteintech Group brand and is not available to purchase from any other manufacturer.

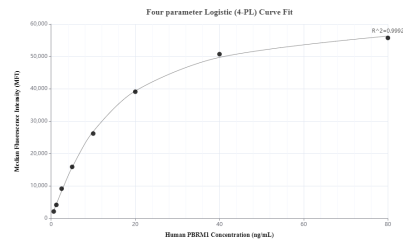
Selected Validation Data



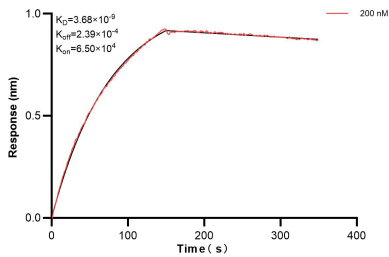
Various lysates were subjected to SDS PAGE followed by western blot with 83677-2-RR (PBRM1 antibody) at dilution of 1:5000 incubated at room temperature for 1.5 hours. This data was developed using the same antibody clone with 83677-2-PBS in a different storage buffer formulation.



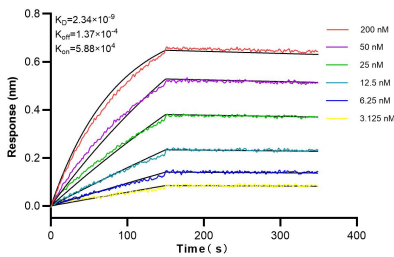
Immunofluorescent analysis of (4% PFA) fixed HeLa cells using PBRM1 antibody (83677-2-RR, Clone: 240655H5) at dilution of 1:1000 and Coralite® 488-Conjugated Goat Anti-Rabbit IgG(H+L) (SA00013-2), CL594-Phalloidin (red). This data was developed using the same antibody clone with 83677-2-PBS in a different storage buffer formulation.



Cytometric bead array standard curve of MP00656-3, PBRM1 Recombinant Matched Antibody Pair, PBS Only. Capture antibody: 83677-2-PBS. Detection antibody: 83677-3-PBS. Standard: Ag33623. Range: 0.625-80 ng/mL.



Biolayer interferometry (BLI) kinetic assay of 83677-2-PBS against Human PBRM1 was performed. The affinity constant is 3.68 nM.



Biolayer interferometry (BLI) kinetic assays of 83677-2-RR against Human PBRM1 were performed. The affinity constant is 2.34 nM.