

For Research Use Only

# SLC4A7 Recombinant antibody, PBS Only (Capture)



Catalog Number: 83676-3-PBS

## Basic Information

Catalog Number:

83676-3-PBS

Size:

1 mg/ml

Source:

Rabbit

Isotype:

IgG

Immunogen Catalog Number:

AG30545

GenBank Accession Number:

NM\_003615

GeneID (NCBI):

9497

UNIPROT ID:

Q9Y6M7

Full Name:

solute carrier family 4, sodium bicarbonate cotransporter, member 7

Calculated MW:

136 kDa

Purification Method:

Protein A purification

CloneNo.:

240689C10

## Applications

Tested Applications:

Indirect ELISA, Cytometric bead array

Species Specificity:

Human

## Background Information

### Storage

Storage:

Store at -80°C.

**The product is shipped with ice packs. Upon receipt, store it immediately at -80°C**

Storage Buffer:

PBS Only

For technical support and original validation data for this product please contact:

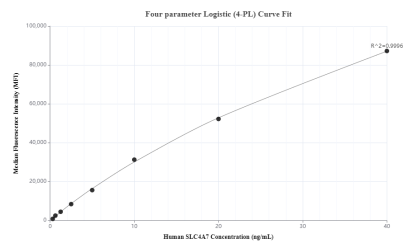
T: 4006900926

E: [Proteintech-CN@ptglab.com](mailto:Proteintech-CN@ptglab.com)

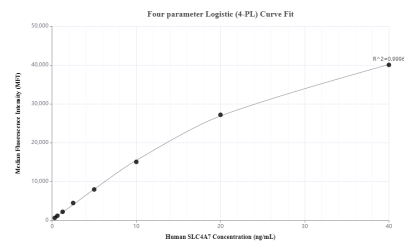
W: [ptgcn.com](http://ptgcn.com)

**This product is exclusively available under Proteintech Group brand and is not available to purchase from any other manufacturer.**

# Selected Validation Data



Cytometric bead array standard curve of MP00654-1, SLC4A7 Recombinant Matched Antibody Pair, PBS Only. Capture antibody: 83676-3-PBS. Detection antibody: 83676-2-PBS. Standard: Ag30545. Range: 0.313-40 ng/mL



Cytometric bead array standard curve of MP00654-3, SLC4A7 Recombinant Matched Antibody Pair, PBS Only. Capture antibody: 83676-3-PBS. Detection antibody: 83676-4-PBS. Standard: Ag30545. Range: 0.313-40 ng/mL