

For Research Use Only

# CEA/CD66e Recombinant antibody

Catalog Number: 83653-5-RR



## Basic Information

Catalog Number:

83653-5-RR

Size:

1000 ug/ml

Source:

Rabbit

Isotype:

IgG

GenBank Accession Number:

NM\_004363

GeneID (NCBI):

1048

UNIPROT ID:

P06731-1

Full Name:

carcinoembryonic antigen-related  
cell adhesion molecule 5

Calculated MW:

77 kDa

Observed MW:

200 kDa

Purification Method:

Protein A purification

CloneNo.:

240666B12

Recommended Dilutions:

WB 1:5000-1:50000

IHC 1:500-1:2000

IF/ICC 1:125-1:500

## Applications

Tested Applications:

WB, IHC, IF/ICC, ELISA

Species Specificity:

human

**Note-IHC: suggested antigen retrieval with  
TE buffer pH 9.0; (\*) Alternatively, antigen  
retrieval may be performed with citrate  
buffer pH 6.0**

Positive Controls:

WB : MCF-7 cells, human saliva

IHC : human ovary cancer tissue,

IF/ICC : HT-29 cells,

## Background Information

Carcinoembryonic antigen (CEA), also known as CEACAM5 or CD66e, is a cell surface glycoprotein belonging to the immunoglobulin superfamily, mainly serving as a cell adhesion molecule mediating intercellular contact by both homophilic and heterophilic binding (PMID: 21731662). CEA inhibits anoikis and plays a role in tumorigenesis and metastasis. CEA has been found to be overexpressed in a wide variety of human cancers, including colon, breast, and lung (PMID: 17167768). CEA is a tumor marker and is routinely exploited for diagnosis. This antibody is raised against 35-685 aa of human CEA/CD66e and can cross-react with CEACAM1/CD66a and CEACAM3/CD66d.

## Storage

Storage:

Store at -20°C. Stable for one year after shipment.

Storage Buffer:

PBS with 0.02% sodium azide and 50% glycerol pH 7.3.

Aliquoting is unnecessary for -20°C storage

For technical support and original validation data for this product please contact:

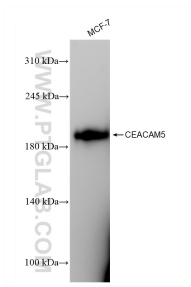
T: 4006900926

E: Proteintech-CN@ptglab.com

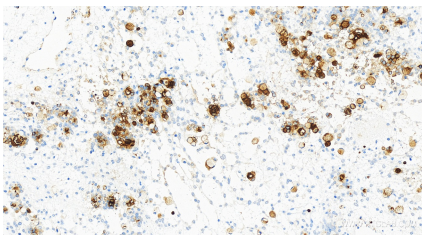
W: ptgcn.com

This product is exclusively available under Proteintech Group brand and is not available to purchase from any other manufacturer.

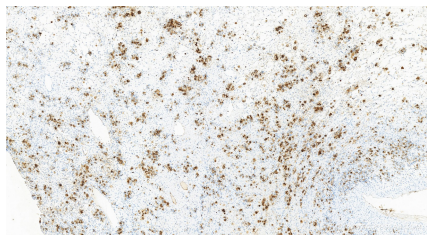
Selected Validation Data



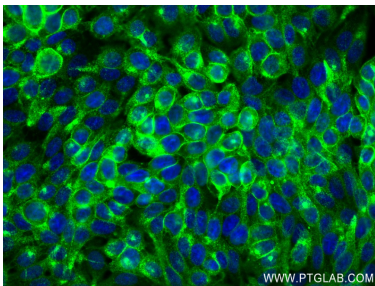
MCF-7 cells were subjected to SDS PAGE followed by western blot with 83653-5-RR (CEA antibody) at dilution of 1:10000 incubated at room temperature for 1.5 hours.



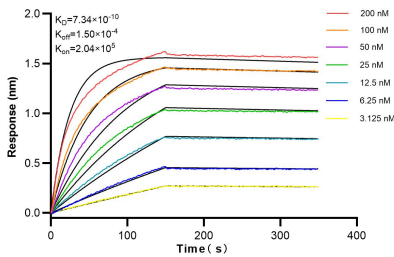
Immunohistochemical analysis of paraffin-embedded human ovary cancer tissue slide using 83653-5-RR (CEA antibody) at dilution of 1:1000 (under 40x lens). Heat mediated antigen retrieval with Tris-EDTA buffer (pH 9.0).



Immunohistochemical analysis of paraffin-embedded human ovary cancer tissue slide using 83653-5-RR (CEA antibody) at dilution of 1:1000 (under 10x lens). Heat mediated antigen retrieval with Tris-EDTA buffer (pH 9.0).



Immunofluorescent analysis of (4% PFA) fixed HT-29 cells using CEA antibody (83653-5-RR, Clone: 240666B12) at dilution of 1:250 and Coralite®488-Conjugated AffiniPure Goat Anti-Rabbit IgG(H+L) (SA00013-2).



Biolayer interferometry (BLI) kinetic assays of 83653-5-RR against Human CEA were performed. The affinity constant is 0.734 nM.