

For Research Use Only

# CEA/CD66e Recombinant antibody, PBS Only (Detector)

Catalog Number: 83653-3-PBS



## Basic Information

Catalog Number:

83653-3-PBS

Size:

1 mg/ml

Source:

Rabbit

Isotype:

IgG

GenBank Accession Number:

NM\_004363

GeneID (NCBI):

1048

UNIPROT ID:

P06731-1

Full Name:

carcinoembryonic antigen-related  
cell adhesion molecule 5

Calculated MW:

77 kDa

Purification Method:

Protein A purification

CloneNo.:

240666C12

## Applications

Tested Applications:

Cytometric bead array, Sandwich ELISA, Indirect ELISA,  
Sample test

Species Specificity:

human

## Background Information

### Storage

Storage:

Store at -80°C.

The product is shipped with ice packs. Upon receipt, store it immediately at -80°C

Storage Buffer:

PBS Only

For technical support and original validation data for this product please contact:

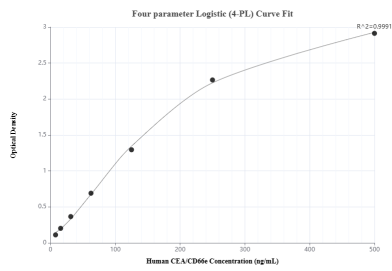
T: 4006900926

E: Proteintech-CN@ptglab.com

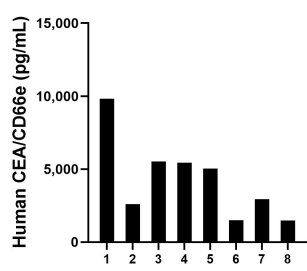
W: ptgcn.com

This product is exclusively available under Proteintech Group brand and is not available to purchase from any other manufacturer.

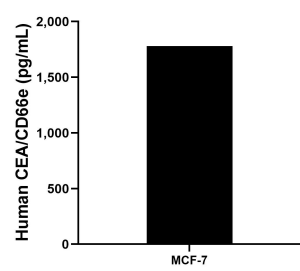
Selected Validation Data



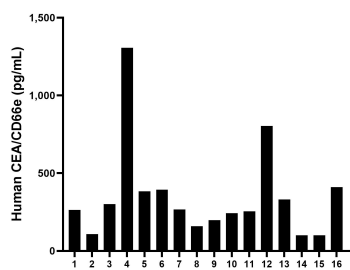
Sandwich ELISA standard curve of MP00626-3, Human CEA/CD66e Recombinant Matched Antibody Pair - PBS only. 83653-1-PBS was coated to a plate as the capture antibody and incubated with serial dilutions of standard Eg0449. 83653-3-PBS was HRP conjugated as the detection antibody. Range: 7.8-500 pg/mL



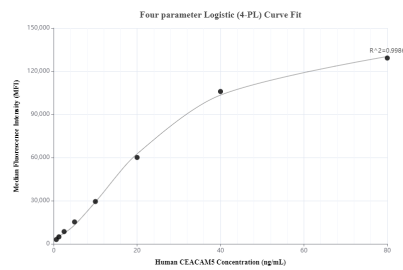
Saliva of eight individual healthy human donors was measured. The human CEA/CD66e concentration of detected samples was determined to be 4,297.5 pg/mL with a range of 1,476.6 - 9,827.4 pg/mL



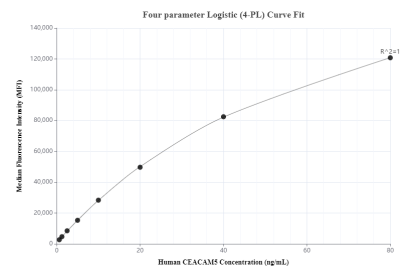
The mean CEA/CD66e concentration was determined to be 1,780.9 pg/mL in MCF-7 cell extract based on a 1.5 mg/mL extract load.



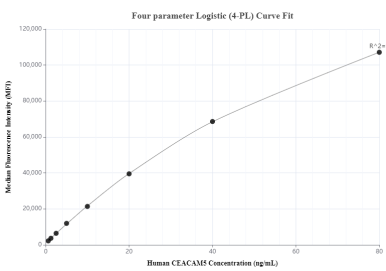
Serum of sixteen individual healthy human donors was measured. The human CEA/CD66e concentration of detected samples was determined to be 351.5 pg/mL with a range of 100.4 - 1,305.8 pg/mL



Cytometric bead array standard curve of MP00626-1, CEA/CD66e Recombinant Matched Antibody Pair, PBS Only. Capture antibody: 83653-4-PBS. Detection antibody: 83653-3-PBS. Standard: Eg0449. Range: 0.625-80 ng/mL



Cytometric bead array standard curve of MP00626-2, CEA/CD66e Recombinant Matched Antibody Pair, PBS Only. Capture antibody: 83653-2-PBS. Detection antibody: 83653-3-PBS. Standard: Eg0449. Range: 0.625-80 ng/mL



Cytometric bead array standard curve of MP00626-3, CEA/CD66e Recombinant Matched Antibody Pair, PBS Only. Capture antibody: 83653-1-PBS. Detection antibody: 83653-3-PBS. Standard: Eg0449. Range: 0.625-80 ng/mL