

For Research Use Only

RNASET2 Recombinant antibody

Catalog Number: 83650-3-RR



Basic Information

Catalog Number:

83650-3-RR

Size:

1000 ug/ml

Source:

Rabbit

Isotype:

IgG

Immunogen Catalog Number:

AG28353

GenBank Accession Number:

BC039713

GeneID (NCBI):

8635

UNIPROT ID:

O00584

Full Name:

ribonuclease T2

Calculated MW:

256 aa, 29 kDa

Purification Method:

Protein A purification

CloneNo.:

240581H5

Recommended Dilutions:

IF/ICC 1:125-1:500

Applications

Tested Applications:

IF/ICC, ELISA

Species Specificity:

human

Positive Controls:

IF/ICC : BxPC-3 cells,

Background Information

RNASET2(Ribonuclease T2) is also named as RNASE6PL(Ribonuclease 6) and belongs to the RNase T2 family. It is a unique member of the growing family of tumor-antagonizing genes and behaves as a class II tumor suppressor and abolish the tumorigenic potential of an ovarian cancer-derived cell line. This protein has 2 isoforms produced by alternative splicing. Both mildly glycosylated (ranging from 38 to 45 kDa) and highly glycosylated forms (ranging from 50 to 80 kDa) of human tumor suppressor protein RNASET2 can be detected in immunoblotting in P. Pastoris(PMID: 21446958).

Storage

Storage:

Store at -20°C. Stable for one year after shipment.

Storage Buffer:

PBS with 0.02% sodium azide and 50% glycerol pH 7.3.

Aliquoting is unnecessary for -20°C storage

For technical support and original validation data for this product please contact:

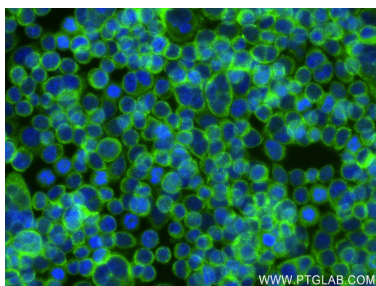
T: 4006900926

E: Proteintech-CN@ptglab.com

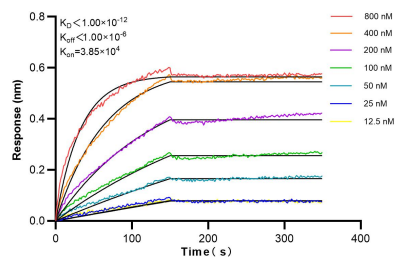
W: ptgcn.com

This product is exclusively available under Proteintech Group brand and is not available to purchase from any other manufacturer.

Selected Validation Data



Immunofluorescent analysis of (4% PFA) fixed BxPC-3 cells using RNASET2 antibody (83650-3-RR, Clone: 240581H5) at dilution of 1:250 and CoraLite®488-Conjugated AffiniPure Goat Anti-Rabbit IgG(H+L) (SA00013-2).



Biolayer interferometry (BLI) kinetic assays of 83650-3-RR against Human RNASET2 were performed. The affinity constant is below 1 pM.