

For Research Use Only

RNASET2 Recombinant antibody, PBS Only (Capture)

Catalog Number: 83650-2-PBS



Basic Information

Catalog Number:

83650-2-PBS

Size:

1 mg/ml

Source:

Rabbit

Isotype:

IgG

Immunogen Catalog Number:

AG28353

GenBank Accession Number:

BC039713

GeneID (NCBI):

8635

UNIPROT ID:

O00584

Full Name:

ribonuclease T2

Calculated MW:

256 aa, 29 kDa

Purification Method:

Protein A purification

CloneNo.:

240581D11

Applications

Tested Applications:

Cytometric bead array, Sandwich ELISA, Indirect ELISA, Sample test

Species Specificity:

human

Background Information

Storage

Storage:

Store at -80°C.

The product is shipped with ice packs. Upon receipt, store it immediately at -80°C

Storage Buffer:

PBS Only

For technical support and original validation data for this product please contact:

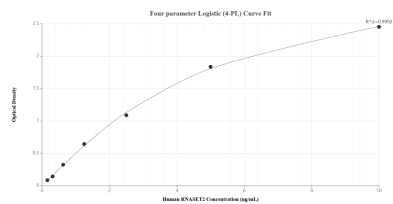
T: 4006900926

E: Proteintech-CN@ptglab.com

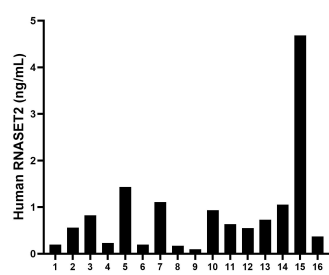
W: ptgcn.com

This product is exclusively available under Proteintech Group brand and is not available to purchase from any other manufacturer.

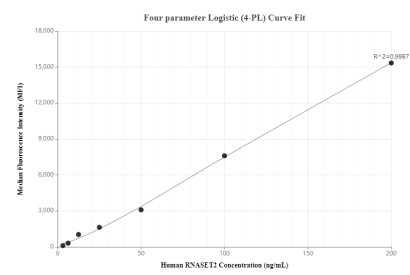
Selected Validation Data



Sandwich ELISA standard curve of MP00620-1, Human RNASET2 Recombinant Matched Antibody Pair - PBS only. 83650-2-PBS was coated to a plate as the capture antibody and incubated with serial dilutions of standard Ag28353. 83650-1-PBS was HRP conjugated as the detection antibody. Range: 0.156-10 ng/mL.



Serum of sixteen individual healthy human donors was measured. The RNASET2 concentration of detected samples was determined to be 0.86 ng/mL with a range of 0.10-4.68 ng/mL.



Cytometric bead array standard curve of MP00620-1, RNASET2 Recombinant Matched Antibody Pair, PBS Only. Capture antibody: 83650-2-PBS. Detection antibody: 83650-1-PBS. Standard: Ag28353. Range: 3.125-200 ng/mL.