

For Research Use Only

RNASET2 Recombinant antibody, PBS Only (Detector)

Catalog Number: 83650-1-PBS



Basic Information

Catalog Number:

83650-1-PBS

Size:

1 mg/ml

Source:

Rabbit

Isotype:

IgG

Immunogen Catalog Number:

AG28353

GenBank Accession Number:

BC039713

GeneID (NCBI):

8635

UNIPROT ID:

O00584

Full Name:

ribonuclease T2

Calculated MW:

256 aa, 29 kDa

Purification Method:

Protein A purification

CloneNo.:

240581C4

Applications

Tested Applications:

WB, Cytometric bead array, Sandwich ELISA, Indirect ELISA, Sample test

Species Specificity:

human

Background Information

Storage

Storage:

Store at -80°C.

The product is shipped with ice packs. Upon receipt, store it immediately at -80°C

Storage Buffer:

PBS Only

For technical support and original validation data for this product please contact:

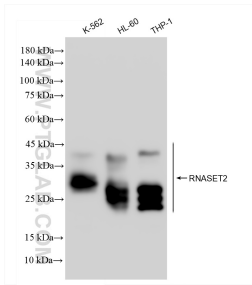
T: 4006900926

E: Proteintech-CN@ptglab.com

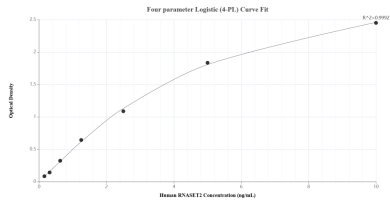
W: ptgcn.com

This product is exclusively available under Proteintech Group brand and is not available to purchase from any other manufacturer.

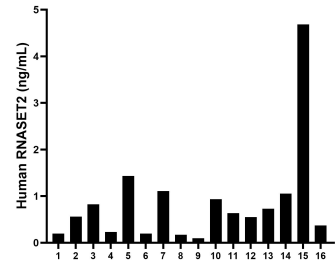
Selected Validation Data



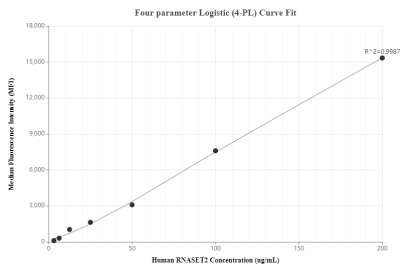
Various lysates were subjected to SDS PAGE followed by western blot with 83650-1-RR (RNASET2 antibody) at dilution of 1:1000 incubated at room temperature for 1.5 hours. This data was developed using the same antibody clone with 83650-1-PBS in a different storage buffer formulation.



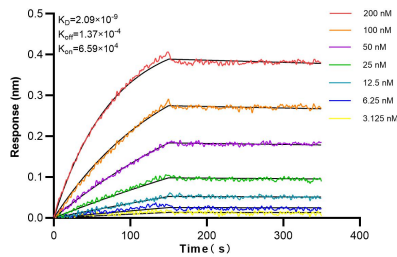
Sandwich ELISA standard curve of MP00620-1, Human RNASET2 Recombinant Matched Antibody Pair - PBS only. 83650-2-PBS was coated to a plate as the capture antibody and incubated with serial dilutions of standard Ag28353. 83650-1-PBS was HRP conjugated as the detection antibody. Range: 0.156-10 ng/mL.



Serum of sixteen individual healthy human donors was measured. The RNASET2 concentration of detected samples was determined to be 0.86 ng/mL with a range of 0.10-4.68 ng/mL.



Cytometric bead array standard curve of MP00620-1, RNASET2 Recombinant Matched Antibody Pair, PBS Only. Capture antibody: 83650-2-PBS. Detection antibody: 83650-1-PBS. Standard: Ag28353. Range: 3.125-200 ng/mL.



Bi-layer interferometry (BLI) kinetic assays of 83650-1-RR against Human RNASET2 were performed. The affinity constant is 2.09 nM.