

For Research Use Only

# RCN1 Recombinant antibody, PBS Only (Detector)

Catalog Number: 83638-3-PBS



## Basic Information

Catalog Number:	83638-3-PBS	GenBank Accession Number:	BC010120	Purification Method:	Protein A purification
Size:	1 mg/ml	GeneID (NCBI):	5954	CloneNo.:	240473E9
Source:	Rabbit	UNIPROT ID:	Q15293		
Isotype:	IgG	Full Name:	reticulocalbin 1, EF-hand calcium binding domain		
Immunogen Catalog Number:	AG13256	Calculated MW:	39 kDa		
		Observed MW:	44-46 kDa		

## Applications

**Tested Applications:**  
WB, IF/ICC, FC (Intra), Cytometric bead array, Indirect ELISA

**Species Specificity:**  
human

## Background Information

Reticulocalbin-1 (RCN1) belongs to the CREC family. Reticulocalbin - 1, an endoplasmic reticulum protein, plays a crucial role in calcium homeostasis and inhibits ER stress - induced apoptosis (PMID: 28319095). Its main functions include maintaining intracellular homeostasis and regulating cell proliferation and apoptosis, and it plays an important role in the development of various tumours (PMID: 38057406). RCN1 is expressed aberrantly and at a high level in various tumors, including acute myeloid leukemia (AML) (PMID: 37746742). In multiple cancers, such as glioblastoma, non - small cell lung cancer, renal cell carcinoma, hepatocellular carcinoma, and oral squamous cell carcinoma, the overexpression of RCN1 has been observed indicating its involvement in tumorigenesis and invasion (PMID: 30172915, PMID: 34722631).

## Storage

**Storage:**  
Store at -80°C.  
**The product is shipped with ice packs. Upon receipt, store it immediately at -80°C**

**Storage Buffer:**  
PBS Only

For technical support and original validation data for this product please contact:

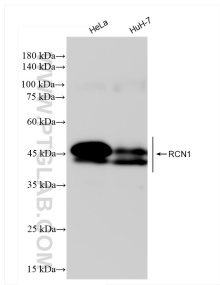
T: 4006900926

E: Proteintech-CN@ptglab.com

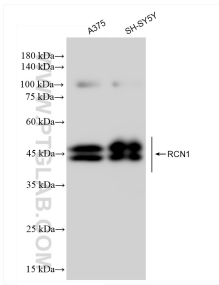
W: ptgcn.com

**This product is exclusively available under Proteintech Group brand and is not available to purchase from any other manufacturer.**

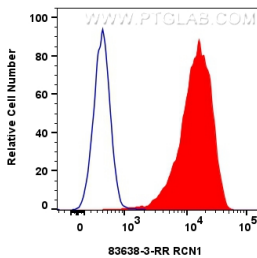
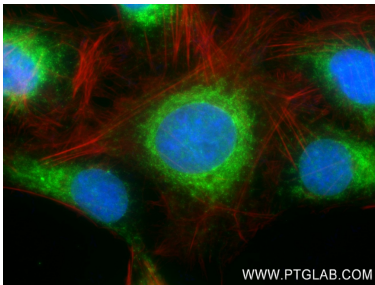
Selected Validation Data



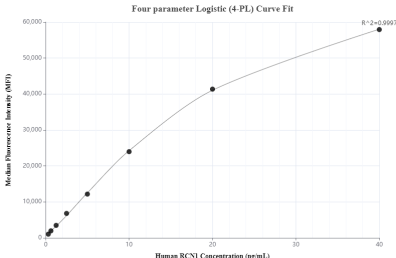
Various lysates were subjected to SDS PAGE followed by western blot with 83638-3-RR (RCN1 antibody) at dilution of 1:5000 incubated at room temperature for 1.5 hours. This data was developed using the same antibody clone with 83638-3-PBS in a different storage buffer formulation.



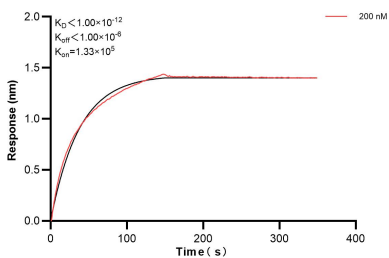
Various lysates were subjected to SDS PAGE followed by western blot with 83638-3-RR (RCN1 antibody) at dilution of 1:5000 incubated at room temperature for 1.5 hours. This data was developed using the same antibody clone with 83638-3-PBS in a different storage buffer formulation.



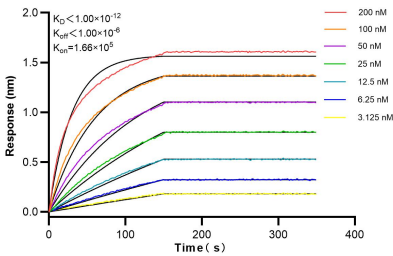
1x10<sup>6</sup> HeLa cells were intracellularly stained with 0.25 ug RCN1 Recombinant antibody (83638-3-RR, Clone:240473E9) and CoraLite®488-Conjugated Goat Anti-Rabbit IgG(H+L) (SA00013-2)(red), or 0.25 ug Control Antibody (30000-O-AP) (blue). Cells were fixed with 4% PFA and permeabilized with Flow Cytometry Perm Buffer (PF00011-C). This data was developed using the same antibody clone with 83638-3-PBS in a different storage buffer formulation.



Cytometric bead array standard curve of MP00637-3, RCN1 Recombinant Matched Antibody Pair, PBS Only. Capture antibody: 83638-4-PBS. Detection antibody: 83638-3-PBS. Standard: Ag13256. Range: 0.313-40 ng/mL.



Biolayer interferometry (BLI) kinetic assay of 83638-3-PBS against Human RCN1 was performed. The affinity constant is below 1 pM.



Biolayer interferometry (BLI) kinetic assays of 83638-3-RR against Human RCN1 were performed. The affinity constant is below 1 pM.