

For Research Use Only

# CDK2 Recombinant antibody, PBS Only (Capture/Detector)

Catalog Number: 83635-2-PBS



## Basic Information

Catalog Number:

83635-2-PBS

Size:

1 mg/ml

Source:

Rabbit

Isotype:

IgG

Immunogen Catalog Number:

AG17133

GenBank Accession Number:

BC003065

GeneID (NCBI):

1017

UNIPROT ID:

P24941

Full Name:

cyclin-dependent kinase 2

Calculated MW:

298 aa, 34 kDa

Observed MW:

30-33 kDa

Purification Method:

Protein A purification

CloneNo.:

240580G11

## Applications

Tested Applications:

WB, IHC, IF/ICC, FC (Intra), Cytometric bead array,  
Indirect ELISA

Species Specificity:

human, rat

## Background Information

CDK2(Cyclin-dependent kinase 2) is also named as CDKN2 and belongs to the protein kinase superfamily, CMGC Ser/Thr protein kinase family, CDC2/CDKX subfamily. It is involved in the control of the cell cycle; essential for meiosis, but dispensable for mitosis. It has 2 isoforms produced by alternative splicing.

## Storage

Storage:

Store at -80°C.

The product is shipped with ice packs. Upon receipt, store it immediately at -80°C

Storage Buffer:

PBS Only

For technical support and original validation data for this product please contact:

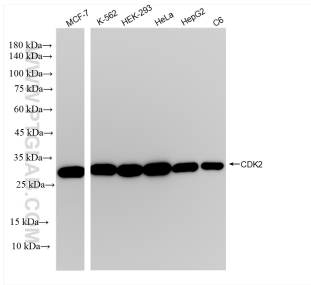
T: 4006900926

E: Proteintech-CN@ptglab.com

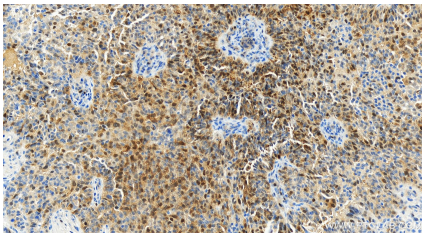
W: ptgcn.com

This product is exclusively available under Proteintech Group brand and is not available to purchase from any other manufacturer.

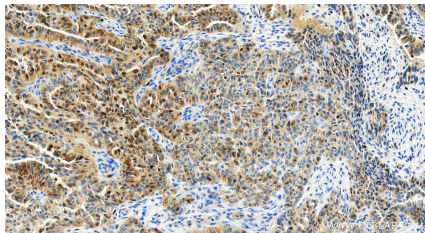
Selected Validation Data



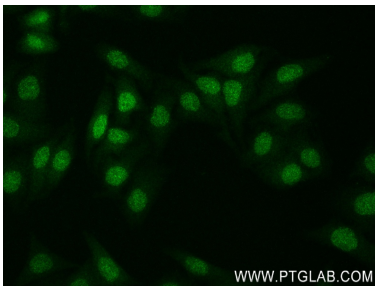
Various lysates were subjected to SDS PAGE followed by western blot with 83635-2-RR (CDK2 antibody) at dilution of 1:10000 incubated at room temperature for 1.5 hours. This data was developed using the same antibody clone with 83635-2-PBS in a different storage buffer formulation.



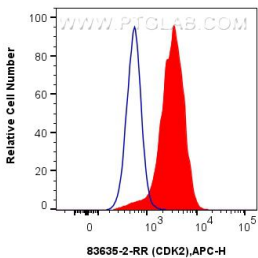
Immunohistochemical analysis of paraffin-embedded human ovarian cancer slide using 83635-2-RR (CDK2 antibody) at dilution of 1:200 (under 20x lens). Heat mediated antigen retrieval with Tris-EDTA buffer (pH 9.0). This data was developed using the same antibody clone with 83635-2-PBS in a different storage buffer formulation.



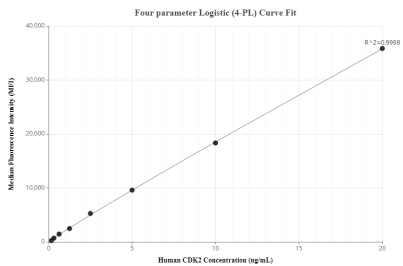
Immunohistochemical analysis of paraffin-embedded human ovarian cancer slide using 83635-2-RR (CDK2 antibody) at dilution of 1:200 (under 20x lens). Heat mediated antigen retrieval with Tris-EDTA buffer (pH 9.0). This data was developed using the same antibody clone with 83635-2-PBS in a different storage buffer formulation.



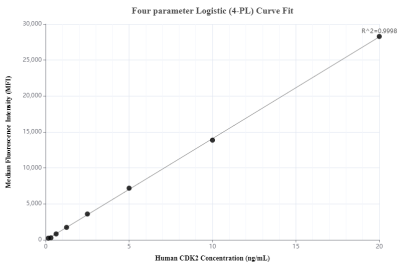
Immunofluorescent analysis of (4% PFA) fixed HepG2 cells using CDK2 antibody (83635-2-RR, Clone: 240580G11 ) at dilution of 1:200 and CoraLite®488-Conjugated AffiniPure Goat Anti-Rabbit IgG(H+L) (SA00013-2). This data was developed using the same antibody clone with 83635-2-PBS in a different storage buffer formulation.



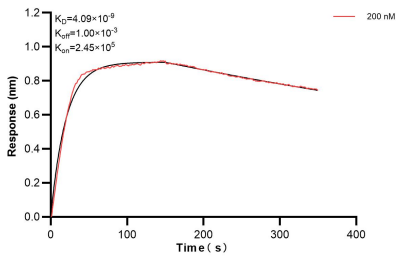
1x10<sup>6</sup> HeLa cells were intracellularly stained with 0.25 ug CDK2 Recombinant antibody (83635-2-RR, Clone:240580G11) and APC-Conjugated AffiniPure Goat Anti-Rabbit IgG(H+L)(red), or 0.25 ug Isotype Control (blue). Cells were fixed and permeabilized with True-Nuclear Transcription Factor Buffer Set. This data was developed using the same antibody clone with 83635-2-PBS in a different storage buffer formulation.



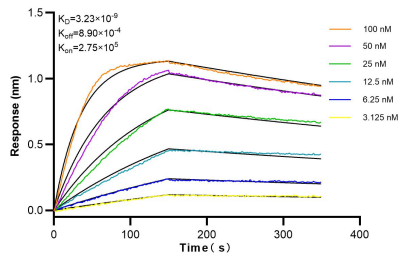
Cytometric bead array standard curve of MP00611-1, CDK2 Recombinant Matched Antibody Pair, PBS Only. Capture antibody: 83635-3-PBS. Detection antibody: 83635-2-PBS. Standard: Ag17133. Range: 0.156-20 ng/mL.



Cytometric bead array standard curve of MP00611-2, CDK2 Recombinant Matched Antibody Pair, PBS Only. Capture antibody: 83635-2-PBS. Detection antibody: 83635-1-PBS. Standard: Ag17133. Range: 0.156-20 ng/mL.



Biolayer interferometry (BLI) kinetic assay of 83635-2-PBS against Human CDK2 was performed. The affinity constant is 4.09 nM.



Biolayer interferometry (BLI) kinetic assays of 83635-2-RR against Human CDK2 were performed. The affinity constant is 3.23 nM.