

For Research Use Only

# OPTN/Optineurin Recombinant antibody, PBS Only (Detector)

Catalog Number: 83634-3-PBS



## Basic Information

Catalog Number:

83634-3-PBS

Size:

1 mg/ml

Source:

Rabbit

Isotype:

IgG

Immunogen Catalog Number:

AG1272

GenBank Accession Number:

BC013876

GeneID (NCBI):

10133

UNIPROT ID:

Q96CV9

Full Name:

optineurin

Calculated MW:

66 kDa

Purification Method:

Protein A purification

CloneNo.:

240636D12

## Applications

Tested Applications:

Cytometric bead array, Sandwich ELISA, Indirect ELISA, Sample test

Species Specificity:

human

## Background Information

### Storage

Storage:

Store at -80°C.

The product is shipped with ice packs. Upon receipt, store it immediately at -80°C

Storage Buffer:

PBS Only

For technical support and original validation data for this product please contact:

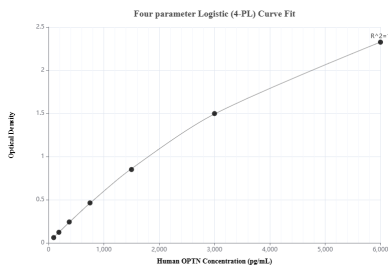
T: 4006900926

E: [Proteintech-CN@ptglab.com](mailto:Proteintech-CN@ptglab.com)

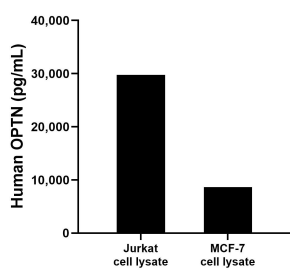
W: [ptgcn.com](http://ptgcn.com)

This product is exclusively available under Proteintech Group brand and is not available to purchase from any other manufacturer.

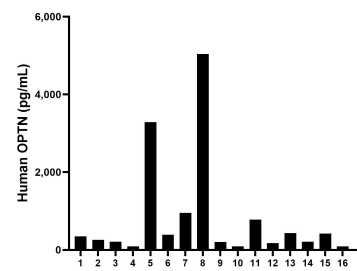
Selected Validation Data



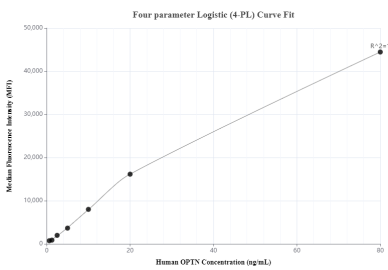
Sandwich ELISA standard curve of MP00621-2, Human OPTN Recombinant Matched Antibody Pair - PBS only. 83634-2-PBS was coated to a plate as the capture antibody and incubated with serial dilutions of standard Ag1272. 83634-3-PBS was HRP conjugated as the detection antibody. Range: 93.8-6000 pg/mL



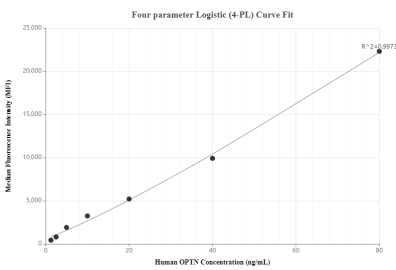
Jurkat and MCF-7 cell lysates were measured. The human OPTN concentration of detected samples was determined to be 29,772.0 pg/mL (based on a 1.0 mg/mL extract load) in Jurkat cell lysate and 8,643.8 pg/mL (based on a 4.3 mg/mL extract load) in MCF-7 cell lysate.



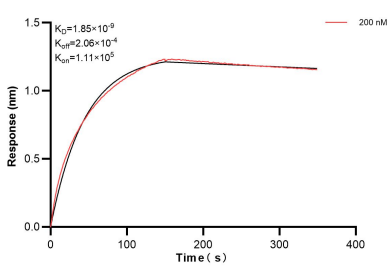
Serum of sixteen individual healthy human donors was measured. The human OPTN concentration of detected samples was determined to be 813.0 pg/mL with a range of 92.0 - 5,037.9 pg/mL



Cytometric bead array standard curve of MP00621-1, OPTN Recombinant Matched Antibody Pair, PBS Only. Capture antibody: 83634-4-PBS. Detection antibody: 83634-3-PBS. Standard: Ag1272. Range: 0.625-80 ng/mL



Cytometric bead array standard curve of MP00621-2, OPTN Recombinant Matched Antibody Pair, PBS Only. Capture antibody: 83634-2-PBS. Detection antibody: 83634-3-PBS. Standard: Ag1272. Range: 1.25-80 ng/mL



Bi-layer interferometry (BLI) kinetic assay of 83634-3-PBS against Human OPTN was performed. The affinity constant is 1.85 nM.