

For Research Use Only

# Phospho-RCC1 (Ser11) Recombinant antibody

Catalog Number: 83630-1-RR



## Basic Information

Catalog Number:

83630-1-RR

Size:

1000 ug/ml

Source:

Rabbit

Isotype:

IgG

GenBank Accession Number:

NM\_001048194

GeneID (NCBI):

1104

UNIPROT ID:

P18754

Full Name:

regulator of chromosome  
condensation 1

Calculated MW:

48 kDa

Observed MW:

45-50 kDa

Purification Method:

Protein A purification

CloneNo.:

230056B10

Recommended Dilutions:

WB 1:200-1:1000

## Applications

Tested Applications:

WB, ELISA

Species Specificity:

human

Positive Controls:

WB : HeLa cells, nocodazole treated HeLa cells

## Background Information

CHC1, also named as RCC1, promotes the exchange of ran-bound gdp by gtp. It is involved in the regulation of onset of chromosome condensation in the S-phase. Phosphorylation of RCC1 on serines located in or near its nuclear localization signal activates RCC1 to generate RanGTP on mitotic chromosomes, which is required for spindle assembly and chromosome segregation. This antibody is a rabbit polyclonal antibody raised against human phospho-CHC1(Ser11) antigen.

## Storage

Storage:

Store at -20°C. Stable for one year after shipment.

Storage Buffer:

PBS with 0.02% sodium azide and 50% glycerol pH 7.3.

Aliquoting is unnecessary for -20°C storage

For technical support and original validation data for this product please contact:

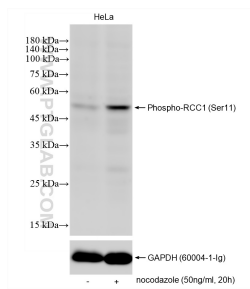
T: 4006900926

E: [Proteintech-CN@ptglab.com](mailto:Proteintech-CN@ptglab.com)

W: [ptgcn.com](http://ptgcn.com)

This product is exclusively available under Proteintech Group brand and is not available to purchase from any other manufacturer.

## Selected Validation Data



Non-treated and nocodazole treated HeLa cells were subjected to SDS PAGE followed by western blot with 83630-1-RR (phospho-RCC1(Ser11) antibody) at dilution of 1:100 incubated at room temperature for 1.5 hours. The membrane was stripped and re-blotted with GAPDH (60004-1-Ig) subsequently.