

For Research Use Only

CTHRC1 Recombinant antibody, PBS Only (Detector)

Catalog Number: 83629-3-PBS



Basic Information

Catalog Number:

83629-3-PBS

Concentration:

1 mg/ml

Source:

Rabbit

Isotype:

IgG

Immunogen Catalog Number:

EG2824

GenBank Accession Number:

NM_138455.3

GeneID (NCBI):

115908

UNIPROT ID:

Q96CG8-1

Full Name:

collagen triple helix repeat containing 1

Calculated MW:

26 kDa

Purification Method:

Protein A purification

CloneNo.:

250319G11

Applications

Tested Applications:

Cytometric bead array, Indirect ELISA, Sample test

Species Specificity:

human

Background Information

Storage

Storage:

Store at -80°C.

The product is shipped with ice packs. Upon receipt, store it immediately at -80°C

Storage Buffer:

PBS only, pH7.3

For technical support and original validation data for this product please contact:

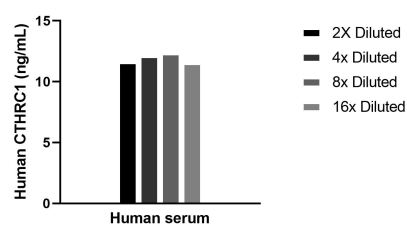
T: 4006900926

E: Proteintech-CN@ptglab.com

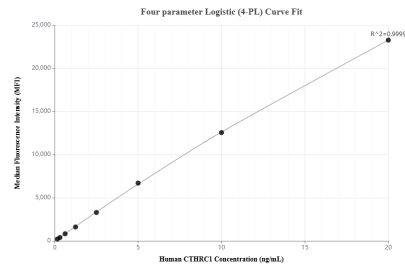
W: ptgcn.com

This product is exclusively available under Proteintech Group brand and is not available to purchase from any other manufacturer.

Selected Validation Data



The mean CTHRC1 concentration was determined to be 11.9 ng/mL in human serum.



Cytometric bead array standard curve of MP02264-1, CTHRC1 Recombinant Matched Antibody Pair, PBS Only. Capture antibody: 83629-4-PBS. Detection antibody: 83629-3-PBS. Standard: Eg2824. Range: 0.156-20 ng/mL.