

For Research Use Only

# UBC12 Recombinant antibody, PBS Only

Catalog Number: 83628-1-PBS



## Basic Information

Catalog Number:

83628-1-PBS

Size:

1 mg/ml

Source:

Rabbit

Isotype:

IgG

Immunogen Catalog Number:

AG5984

GenBank Accession Number:

BC058924

GeneID (NCBI):

9040

UNIPROT ID:

P61081

Full Name:

ubiquitin-conjugating enzyme E2M  
(UBC12 homolog, yeast)

Calculated MW:

21 kDa

Observed MW:

17-20 kDa

Purification Method:

Protein A purification

CloneNo.:

240477H5

## Applications

Tested Applications:

WB, FC (Intra), ELISA

Species Specificity:

human

## Background Information

UBE2M (Ubiquitin-conjugating enzyme E2 M), also called UBC12, accepts the ubiquitin-like protein NEDD8 from the UBA3-NAE1 E1 complex and catalyzes its covalent attachment to other proteins. The specific interaction between UBE2M and the E3 ubiquitin ligase RBX1, but not RBX2, suggests that the RBX1-UBE2M complex neddylates specific target proteins, such as CUL1, CUL2, CUL3 and CUL4. Involved in cell proliferation (PMID: 10207026; 15361859).

## Storage

Storage:

Store at -80°C.

**The product is shipped with ice packs. Upon receipt, store it immediately at -80°C**

Storage Buffer:

PBS Only

For technical support and original validation data for this product please contact:

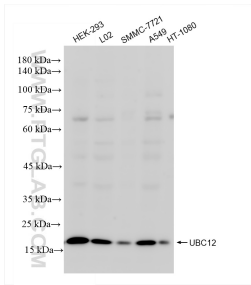
T: 4006900926

E: [Proteintech-CN@ptglab.com](mailto:Proteintech-CN@ptglab.com)

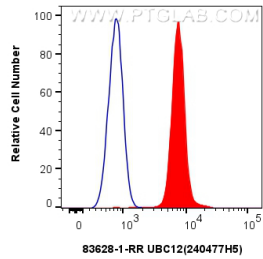
W: [ptgcn.com](http://ptgcn.com)

**This product is exclusively available under Proteintech Group brand and is not available to purchase from any other manufacturer.**

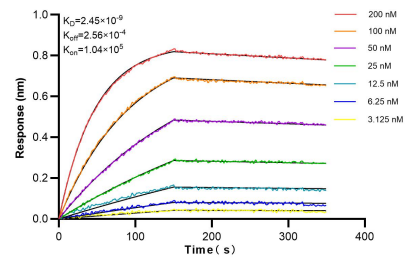
Selected Validation Data



Various lysates were subjected to SDS PAGE followed by western blot with 83628-1-RR (UBC12 antibody) at dilution of 1:500 incubated at room temperature for 1.5 hours. This data was developed using the same antibody clone with 83628-1-PBS in a different storage buffer formulation.



1x10<sup>6</sup> HEK-293 cells were intracellularly stained with 0.25 ug UBC12 Recombinant antibody (83628-1-RR, Clone:240477H5) and CoraLite®488-Conjugated Goat Anti-Rabbit IgG(H+L) (SA00013-2)(red), or 0.25 ug Rabbit IgG Isotype Control Recombinant Antibody (98136-1-RR, Clone: 240953C9) (blue). Cells were fixed and permeabilized with Transcription Factor Staining Buffer Kit (PF00011). This data was developed using the same antibody clone with 83628-1-PBS in a



Biolayer interferometry (BLI) kinetic assays of 83628-1-RR against Human UBC12 were performed. The affinity constant is 2.45 nM.