

For Research Use Only

HDAC1 Recombinant antibody, PBS Only (Detector)

Catalog Number: 83624-4-PBS



Basic Information

Catalog Number:

83624-4-PBS

Size:

1 mg/ml

Source:

Rabbit

Isotype:

IgG

Immunogen Catalog Number:

AG0256

GenBank Accession Number:

BC000301

GeneID (NCBI):

3065

UNIPROT ID:

Q13547

Full Name:

histone deacetylase 1

Calculated MW:

55 kDa

Purification Method:

Protein A purification

CloneNo.:

240614G4

Applications

Tested Applications:

Cytometric bead array, Sandwich ELISA, Indirect ELISA, Sample test

Species Specificity:

human

Background Information

Storage

Storage:

Store at -80°C.

The product is shipped with ice packs. Upon receipt, store it immediately at -80°C

Storage Buffer:

PBS Only

For technical support and original validation data for this product please contact:

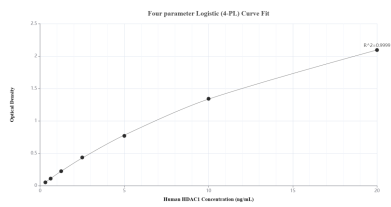
T: 4006900926

E: Proteintech-CN@ptglab.com

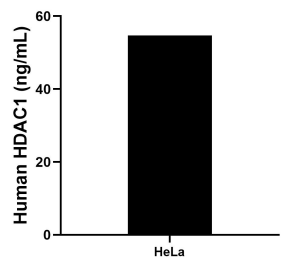
W: ptgcn.com

This product is exclusively available under Proteintech Group brand and is not available to purchase from any other manufacturer.

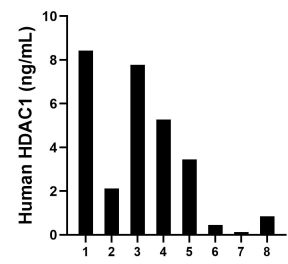
Selected Validation Data



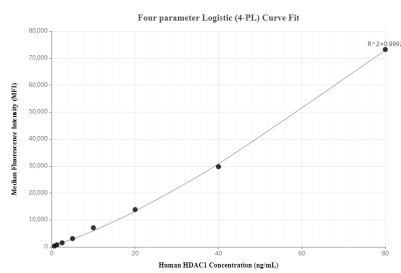
Sandwich ELISA standard curve of MP00577-1, Human HDAC1 Recombinant Matched Antibody Pair - PBS only. 83624-2-PBS was coated to a plate as the capture antibody and incubated with serial dilutions of standard Ag0256. 83624-4-PBS was HRP conjugated as the detection antibody. Range: 0.313-20 ng/mL



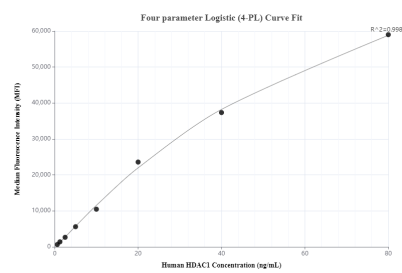
The mean HDAC1 concentration was determined to be 54.72 ng/mL in HeLa cell extract based on a 4.30 mg/mL extract load.



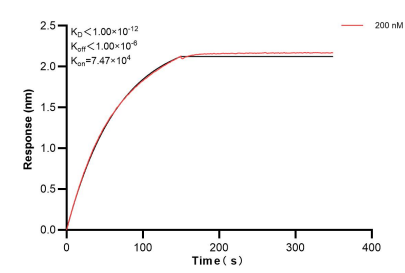
Serum of eight individual healthy human donors was measured. The HDAC1 concentration of detected samples was determined to be 3.56 ng/mL with a range of 0.13 - 8.43 ng/mL



Cytometric bead array standard curve of MP00577-1, HDAC1 Recombinant Matched Antibody Pair, PBS Only. Capture antibody: 83624-2-PBS. Detection antibody: 83624-4-PBS. Standard: Ag0256. Range: 0.625-80 ng/mL



Cytometric bead array standard curve of MP00577-2, HDAC1 Recombinant Matched Antibody Pair, PBS Only. Capture antibody: 83624-3-PBS. Detection antibody: 83624-4-PBS. Standard: Ag0256. Range: 0.625-80 ng/mL



Bi-layer interferometry (BLI) kinetic assay of 83624-4-PBS against Human HDAC1 was performed. The affinity constant is below 1 pM.