

For Research Use Only

CUL3 Recombinant antibody, PBS Only (Capture/Detector)

Catalog Number: 83619-1-PBS



Basic Information

Catalog Number:

83619-1-PBS

Size:

1 mg/ml

Source:

Rabbit

Isotype:

IgG

Immunogen Catalog Number:

AG1555

GenBank Accession Number:

BC039598

GeneID (NCBI):

8452

UNIPROT ID:

Q13618

Full Name:

cullin 3

Calculated MW:

89 kDa

Purification Method:

Protein A purification

CloneNo.:

240534A6

Applications

Tested Applications:

Cytometric bead array, Sandwich ELISA, Indirect ELISA,
Sample test

Species Specificity:

human

Background Information

Storage

Storage:

Store at -80°C.

The product is shipped with ice packs. Upon receipt, store it immediately at -80°C

Storage Buffer:

PBS Only

For technical support and original validation data for this product please contact:

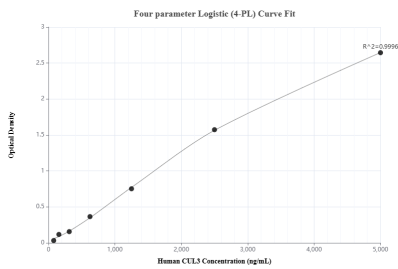
T: 4006900926

E: Proteintech-CN@ptglab.com

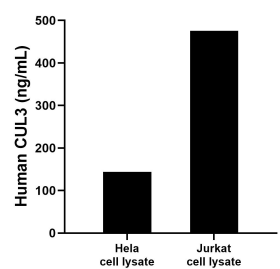
W: ptgcn.com

This product is exclusively available under Proteintech Group brand and is not available to purchase from any other manufacturer.

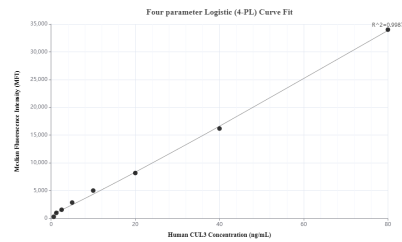
Selected Validation Data



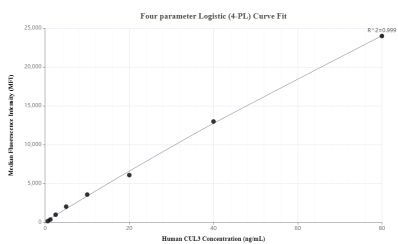
Sandwich ELISA standard curve of MP00599-4, Human CUL3 Recombinant Matched Antibody Pair - PBS only. 83619-7-PBS was coated to a plate as the capture antibody and incubated with serial dilutions of standard Ag1555. 83619-1-PBS was HRP conjugated as the detection antibody. Range: 1.25-80 ng/mL



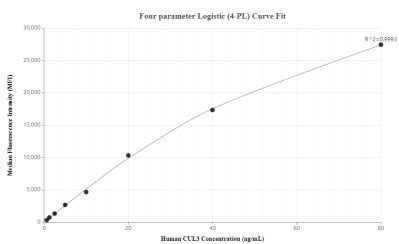
HeLa and Jurkat cell lysates were measured. The human CUL3 concentration of detected samples was determined to be 144.2 ng/mL (based on a 1.2 mg/mL extract load) in HeLa cell lysate and 475.5 ng/mL (based on a 1.0 mg/mL extract load) in Jurkat cell lysate.



Cytometric bead array standard curve of MP00599-1, CUL3 Recombinant Matched Antibody Pair, PBS Only. Capture antibody: 83619-1-PBS. Detection antibody: 83619-2-PBS. Standard: Ag1555. Range: 0.625-80 ng/mL



Cytometric bead array standard curve of MP00599-2, CUL3 Recombinant Matched Antibody Pair, PBS Only. Capture antibody: 83619-4-PBS. Detection antibody: 83619-1-PBS. Standard: Ag1555. Range: 0.625-80 ng/mL



Cytometric bead array standard curve of MP00599-3, CUL3 Recombinant Matched Antibody Pair, PBS Only. Capture antibody: 83619-3-PBS. Detection antibody: 83619-1-PBS. Standard: Ag1555. Range: 0.625-80 ng/mL