

For Research Use Only

# AP1M1 Recombinant antibody

Catalog Number: 83613-6-RR

Featured Product



## Basic Information

Catalog Number:

83613-6-RR

Size:

1000 ug/ml

Source:

Rabbit

Isotype:

IgG

Immunogen Catalog Number:

AG2757

GenBank Accession Number:

BC017469

GeneID (NCBI):

8907

UNIPROT ID:

Q9BX55

Full Name:

adaptor-related protein complex 1,  
mu 1 subunit

Calculated MW:

423 aa, 49 kDa

Observed MW:

49 kDa

Purification Method:

Protein A purification

CloneNo.:

240553H3

Recommended Dilutions:

WB 1:5000-1:50000

IHC 1:500-1:2000

## Applications

Tested Applications:

WB, IHC, FC (Intra), ELISA

Species Specificity:

human, mouse, rat

**Note-IHC: suggested antigen retrieval with  
TE buffer pH 9.0; (\*) Alternatively, antigen  
retrieval may be performed with citrate  
buffer pH 6.0**

Positive Controls:

WB : HepG2 cells, HEK-293 cells, mouse testis tissue,  
PC-3 cells, K-562 cells, Jurkat cells, rat testis tissue

IHC : mouse skin tissue,

## Background Information

AP1M1, also named as CLTNM, Mu-adaptin 1 and Clathrin coat assembly protein AP47, belongs to the adaptor complexes medium subunit family. It is a subunit of clathrin-associated adaptor protein complex 1 that plays a role in protein sorting in the trans-Golgi network (TGN) and endosomes. The AP complexes mediate the recruitment of clathrin to membranes and the recognition of sorting signals within the cytosolic tails of transmembrane cargo molecules.

## Storage

Storage:

Store at -20°C. Stable for one year after shipment.

Storage Buffer:

PBS with 0.02% sodium azide and 50% glycerol pH 7.3.

Aliquoting is unnecessary for -20°C storage

For technical support and original validation data for this product please contact:

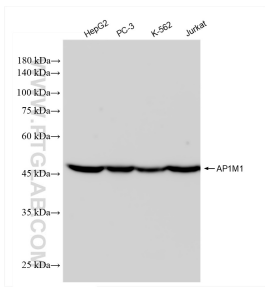
T: 4006900926

E: [Proteintech-CN@ptglab.com](mailto:Proteintech-CN@ptglab.com)

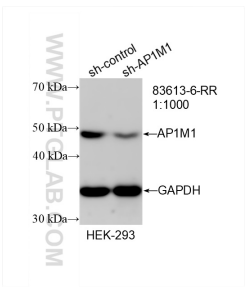
W: [ptgcn.com](http://ptgcn.com)

This product is exclusively available under Proteintech Group brand and is not available to purchase from any other manufacturer.

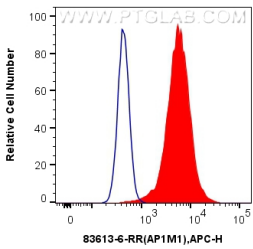
Selected Validation Data



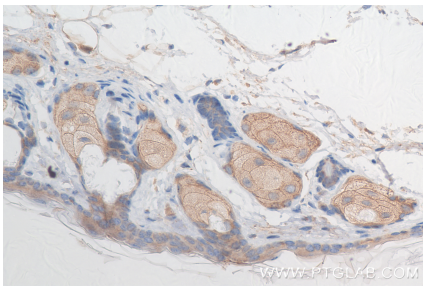
Various lysates were subjected to SDS PAGE followed by western blot with 83613-6-RR (AP1M1 antibody) at dilution of 1:10000 incubated at room temperature for 1.5 hours.



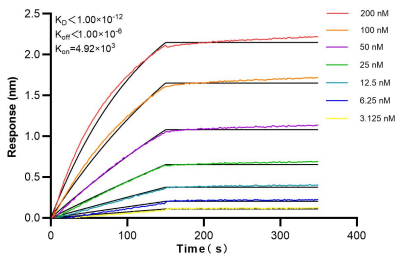
WB result of AP1M1 antibody (83613-6-RR; 1:1000; incubated at room temperature for 1.5 hours) with sh-Control and sh-AP1M1 transfected HEK-293 cells.



1x10<sup>6</sup> HeLa cells were intracellularly stained with 0.25 ug AP1M1 Recombinant antibody (83613-6-RR, Clone:240553H3) and APC-Conjugated AffiniPure Goat Anti-Rabbit IgG(H+L)(red), or 0.25 ug Isotype Control (blue). Cells were fixed with 4% PFA and permeabilized with Flow Cytometry Perm Buffer (PF00011-C).



Immunohistochemical analysis of paraffin-embedded mouse skin tissue slide using 83613-6-RR (AP1M1 antibody) at dilution of 1:1000 (under 40x lens). Heat mediated antigen retrieval with Tris-EDTA buffer (pH 9.0).



Biolayer interferometry (BLI) kinetic assays of 83613-6-RR against Human AP1M1 were performed. The affinity constant is below 1 pM.