

For Research Use Only

# Rat VEGFA Recombinant antibody, PBS Only (Capture)

Catalog Number: 83610-1-PBS



## Basic Information

|                                     |  |  |
|-------------------------------------|--|--|
| Catalog Number:<br>83610-1-PBS      | GenBank Accession Number:<br>NM_001287108.1        | Purification Method:<br>Protein A purification |
| Concentration:<br>1 mg/ml           | GeneID (NCBI):<br>83785                            | CloneNo.:<br>240573B1                          |
| Source:<br>Rabbit                   | UNIPROT ID:<br>P16612-2                            |  |
| Isotype:<br>IgG                     | Full Name:<br>vascular endothelial growth factor A |  |
| Immunogen Catalog Number:<br>EG0941 | Calculated MW:<br>25 kDa                           |  |

## Applications

**Tested Applications:**  
Cytometric bead array, Sandwich ELISA, Indirect ELISA, Sample test

**Species Specificity:**  
rat

## Background Information

### Storage

**Storage:**  
Store at -80°C.  
**The product is shipped with ice packs. Upon receipt, store it immediately at -80°C**

**Storage Buffer:**  
PBS only, pH7.3

For technical support and original validation data for this product please contact:

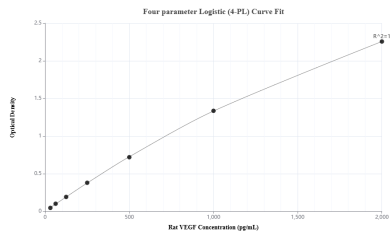
T: 4006900926

E: Proteintech-CN@ptglab.com

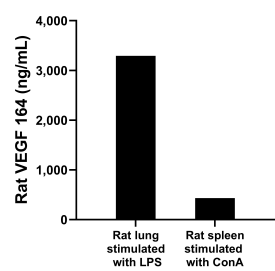
W: ptgcn.com

**This product is exclusively available under Proteintech Group brand and is not available to purchase from any other manufacturer.**

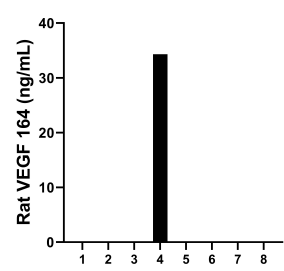
Selected Validation Data



Sandwich ELISA standard curve of MP00598-3, Rat VEGF Recombinant Matched Antibody Pair - PBS only. 83610-1-PBS was coated to a plate as the capture antibody and incubated with serial dilutions of standard Eg0941. 83610-2-PBS was HRP conjugated as the detection antibody. Range: 31.25-2000 pg/mL



Rat lung, cut into 1-2 mm pieces, was cultured for 4 days in 25-30 mL of RPMI supplemented with 10% fetal bovine serum and stimulated with 2.5 ng/mL LPS. The cell culture supernatant was removed, assayed for rat VEGF, and measured 3292.9 pg/mL. Rat spleen, cut into 1-2 mm pieces, was cultured for 3-4 days in 25-30 mL of RPMI supplemented with 10% fetal bovine serum and stimulated with 10  $\mu$ g/mL ConA. The cell culture supernatant was removed, assayed for



Serum of eight rats was measured. The VEGF concentration of one sample was determined to be 34.3 pg/mL, and the range of VEGF 164 concentration was 0 - 34.3 pg/mL