

For Research Use Only

Dystrophin Recombinant antibody, PBS Only

Catalog Number: 83609-5-PBS



Basic Information

Catalog Number: 83609-5-PBS	GenBank Accession Number: BC028720	Purification Method: Protein A purification
Concentration: 1 mg/ml	GeneID (NCBI): 1756	CloneNo.: 240567A3
Source: Rabbit	UNIPROT ID: P11532	
Isotype: IgG	Full Name: dystrophin	
Immunogen Catalog Number: AG3408	Calculated MW: 3685 aa, 427 kDa	
	Observed MW: 430 kDa, 70 kDa	

Applications

Tested Applications:
WB, IHC, IF/ICC, IF-P, FC (Intra), ELISA

Species Specificity:
human, mouse, rat

Background Information

Dystrophin (DMD or BMD) is a large muscle protein whose mutations cause Duchenne muscular dystrophy (DMD) and Becker muscular dystrophy (BMD), the childhood neuromuscular disorders that result in progressive muscle weakness, respiratory difficulties and cardiovascular dysfunction. Dystrophin is a crucial component of the dystrophin-glycoprotein complex which is essential for muscle membrane integrity and stability. Dystrophin is located on the cytoplasmic face of the sarcolemma and connects the cytoskeletal network to the sarcolemma and extracellular matrix. Multiple isoforms of dystrophin exist due to the alternative splicing, with a wide range of MW (69-72, 110-143, 271, 426 kDa). Most tissues contain transcripts of several isoforms.

Storage

Storage:
Store at -80°C.
The product is shipped with ice packs. Upon receipt, store it immediately at -80°C

Storage Buffer:
PBS Only

For technical support and original validation data for this product please contact:

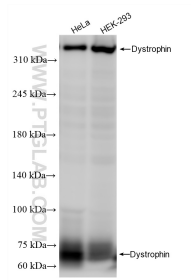
T: 4006900926

E: Proteintech-CN@ptglab.com

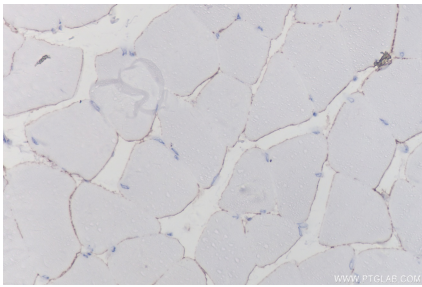
W: ptgcn.com

This product is exclusively available under Proteintech Group brand and is not available to purchase from any other manufacturer.

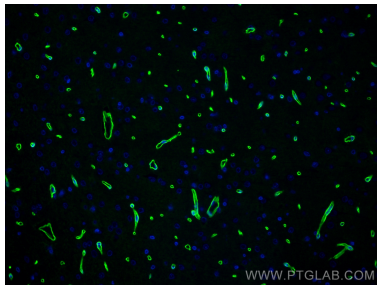
Selected Validation Data



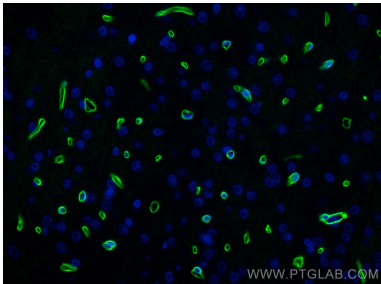
Various lysates were subjected to SDS PAGE followed by western blot with 83609-5-RR (DMD antibody) at dilution of 1:20000 incubated at room temperature for 1.5 hours. This data was developed using the same antibody clone with 83609-5-PBS in a different storage buffer formulation.



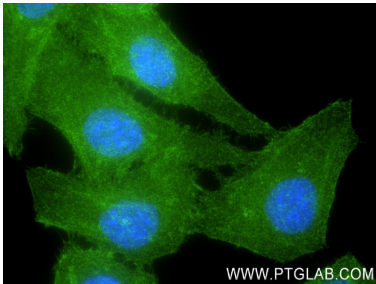
Immunohistochemical analysis of paraffin-embedded mouse skeletal muscle tissue slide using 83609-5-RR (Dystrophin antibody) at dilution of 1:200 (under 40x lens). Heat mediated antigen retrieval with Tris-EDTA buffer (pH 9.0). This data was developed using the same antibody clone with 83609-5-PBS in a different storage buffer formulation.



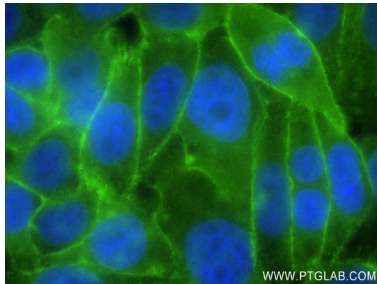
Immunofluorescent analysis of (4% PFA) fixed paraffin-embedded rat brain tissue using Dystrophin antibody (83609-5-RR, Clone: 240567A3) at dilution of 1:400 and Multi-rAb Coralite ® Plus 488-Goat Anti-Rabbit Recombinant Secondary Antibody (H+L) (RGAR002). Heat mediated antigen retrieval with Tris-EDTA buffer (pH 9.0). This data was developed using the same antibody clone with 83609-5-PBS in a different storage buffer formulation.



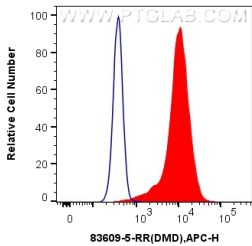
Immunofluorescent analysis of (4% PFA) fixed paraffin-embedded rat brain tissue using Dystrophin antibody (83609-5-RR, Clone: 240567A3) at dilution of 1:400 and Multi-rAb Coralite ® Plus 488-Goat Anti-Rabbit Recombinant Secondary Antibody (H+L) (RGAR002). Heat mediated antigen retrieval with Tris-EDTA buffer (pH 9.0). This data was developed using the same antibody clone with 83609-5-PBS in a different storage buffer formulation.



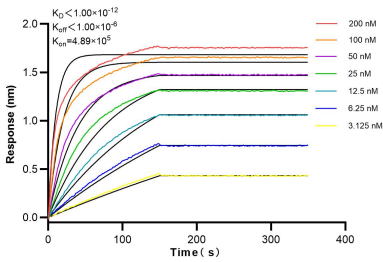
Immunofluorescent analysis of (4% PFA) fixed HepG2 cells using Dystrophin antibody (83609-5-RR, Clone: 240567A3) at dilution of 1:250 and Coralite®488-Conjugated AffiniPure Goat Anti-Rabbit IgG(H+L) (SA00013-2). This data was developed using the same antibody clone with 83609-5-PBS in a different storage buffer formulation.



Immunofluorescent analysis of (4% PFA) fixed HepG2 cells using Dystrophin antibody (83609-5-RR, Clone: 240567A3) at dilution of 1:250 and Coralite®488-Conjugated AffiniPure Goat Anti-Rabbit IgG(H+L) (SA00013-2). This data was developed using the same antibody clone with 83609-5-PBS in a different storage buffer formulation.



1x10⁶ HepG2 cells were intracellularly stained with 0.25 ug Dystrophin Recombinant antibody (83609-5-RR, Clone:240567A3) and APC-Conjugated AffiniPure Goat Anti-Rabbit IgG(H+L) (red), or 0.25 ug Isotype Control (blue). Cells were fixed with 4% PFA and permeabilized with Flow Cytometry Perm Buffer (PF00011-C). This data was developed using the same antibody clone with 83609-5-PBS in a different storage buffer formulation.



Biolayer interferometry (BLI) kinetic assays of 83609-5-RR against Human Dystrophin were performed. The affinity constant is below 1 pM.