

For Research Use Only

# ATM Recombinant antibody, PBS Only (Detector)

Catalog Number: 83608-4-PBS



## Basic Information

Catalog Number:

83608-4-PBS

Concentration:

1 mg/ml

Source:

Rabbit

Isotype:

IgG

Immunogen Catalog Number:

AG25920

GenBank Accession Number:

BC137169

GeneID (NCBI):

472

UNIPROT ID:

Q13315

Full Name:

ataxia telangiectasia mutated

Purification Method:

Protein A purification

CloneNo.:

240560H8

## Applications

Tested Applications:

IF/ICC, FC (Intra), Cytometric bead array, Sandwich ELISA, Indirect ELISA, Sample test

Species Specificity:

human

## Background Information

### Storage

Storage:

Store at -80°C.

The product is shipped with ice packs. Upon receipt, store it immediately at -80°C

Storage Buffer:

PBS Only

For technical support and original validation data for this product please contact:

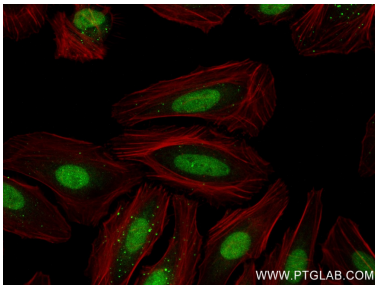
T: 4006900926

E: [Proteintech-CN@ptglab.com](mailto:Proteintech-CN@ptglab.com)

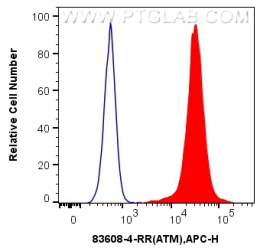
W: [ptgcn.com](http://ptgcn.com)

This product is exclusively available under Proteintech Group brand and is not available to purchase from any other manufacturer.

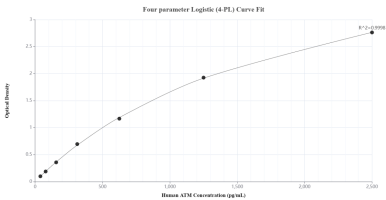
Selected Validation Data



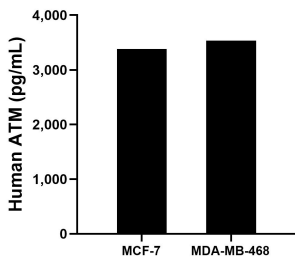
Immunofluorescent analysis of (4% PFA) fixed HeLa cells using ATM antibody (83608-4-RR, Clone: 240560H8 ) at dilution of 1:600 and CoraLite®488-Conjugated AffiniPure Goat Anti-Rabbit IgG(H+L) (SA00013-2), CL594-Phalloidin (red). This data was developed using the same antibody clone with 83608-4-PBS in a different storage buffer formulation.



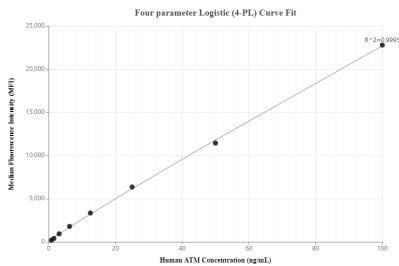
1x10<sup>6</sup> HeLa cells were intracellularly stained with 0.25 ug ATM Recombinant Antibody (83608-4-RR, Clone:240560H8) and APC-Conjugated AffiniPure Goat Anti-Rabbit IgG(H+L)(red), or 0.25 ug Isotype Control (blue). Cells were fixed and permeabilized with Transcription Factor Staining Buffer Kit (PF00011). This data was developed using the same antibody clone with 83608-4-PBS in a different storage buffer formulation.



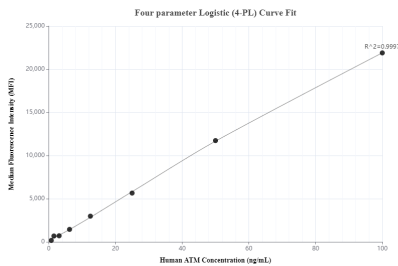
Sandwich ELISA standard curve of MP00592-4, Human ATM Recombinant Matched Antibody Pair - PBS only. 83608-6-PBS was coated to a plate as the capture antibody and incubated with serial dilutions of standard Ag25920. 83608-4-PBS was HRP conjugated as the detection antibody. Range: 39.1-2500 pg/mL



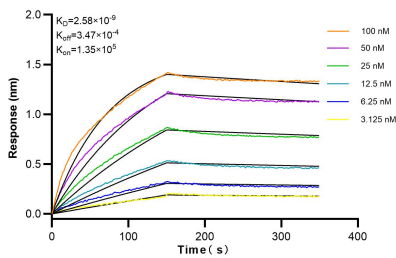
The mean ATM concentration was determined to be 3,383.80 pg/mL in MCF-7 cell extract based on a 1.20 mg/mL extract load and 3,536.69 pg/mL in MDA-MB-468 cell extract based on a 3.20 mg/mL extract load.



Cytometric bead array standard curve of MP00592-1, ATM Recombinant Matched Antibody Pair, PBS Only. Capture antibody: 83608-1-PBS. Detection antibody: 83608-4-PBS. Standard: Ag25920. Range: 0.781-100 ng/mL



Cytometric bead array standard curve of MP00592-3, ATM Recombinant Matched Antibody Pair, PBS Only. Capture antibody: 83608-2-PBS. Detection antibody: 83608-4-PBS. Standard: Ag25920. Range: 0.781-100 ng/mL



Biolayer interferometry (BLI) kinetic assays of 83608-4-RR against Human ATM were performed. The affinity constant is 2.58 nM.