

For Research Use Only

# PD-L1/CD274 Recombinant antibody, PBS Only (Capture/Detector)

Catalog Number:83600-6-PBS



## Basic Information

Catalog Number:

83600-6-PBS

Size:

1 mg/ml

Source:

Rabbit

Isotype:

IgG

GenBank Accession Number:

BC074984

GeneID (NCBI):

29126

UNIPROT ID:

Q9NZQ7

Full Name:

CD274 molecule

Calculated MW:

290 aa, 33 kDa

Purification Method:

Protein A purification

CloneNo.:

240721D2

## Applications

Tested Applications:

Cytometric bead array, Sandwich ELISA, Indirect ELISA,  
Sample test

Species Specificity:

human

## Background Information

### Storage

Storage:

Store at -80°C.

**The product is shipped with ice packs. Upon receipt, store it immediately at -80°C**

Storage Buffer:

PBS Only

For technical support and original validation data for this product please contact:

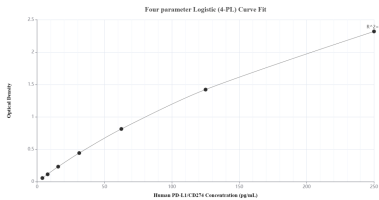
T: 4006900926

E: [Proteintech-CN@ptglab.com](mailto:Proteintech-CN@ptglab.com)

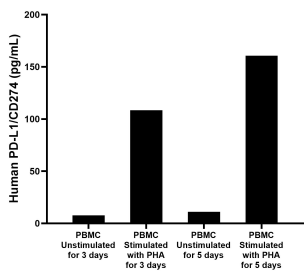
W: [ptgcn.com](http://ptgcn.com)

**This product is exclusively available under Proteintech Group brand and is not available to purchase from any other manufacturer.**

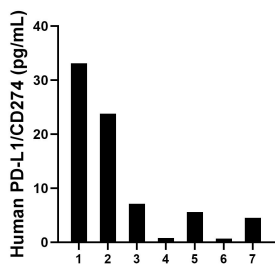
Selected Validation Data



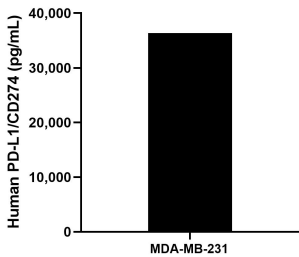
Sandwich ELISA standard curve of MP00601-4, Human PD-L1/CD274 Recombinant Matched Antibody Pair - PBS only. 83600-7-PBS was coated to a plate as the capture antibody and incubated with serial dilutions of standard Eg1114. 83600-6-PBS was HRP conjugated as the detection antibody. Range: 3.9-250 pg/mL



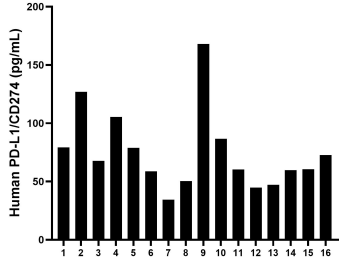
Human peripheral blood mononuclear cells (PBMC) were cultured unstimulated or stimulated with 10  $\mu$ g/mL PHA for 3 days or 5 days. For the PBMC supernatant cultured for 3 days, the mean PD-L1/CD274 concentration was determined to be 7.7 pg/mL in unstimulated PBMC supernatant, 108.4 pg/mL in PHA stimulated PBMC supernatant. For the PBMC supernatant cultured for 5 days, the mean PD-L1/CD274 concentration was determined to be 11.0 pg/mL in unstimulated



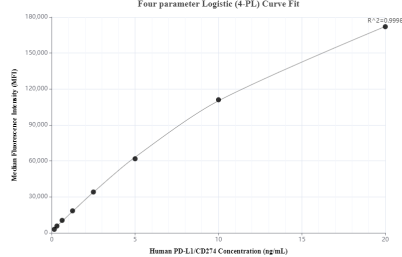
Urine of seven individual healthy human donors was measured. The PD-L1/CD274 concentration of detected samples was determined to be 10.8 pg/mL with a range of 0.7 - 33.1 pg/mL



The mean PD-L1/CD274 concentration was determined to be 36,368.3 pg/mL in MDA-MB-231 cell extract based on a 2.3 mg/mL extract load.



Serum of sixteen individual healthy human donors was measured. The PD-L1/CD274 concentration of detected samples was determined to be 75.1 pg/mL with a range of 34.4-168.1 pg/mL



Cytometric bead array standard curve of MP00601-3, PD-L1/CD274 Recombinant Matched Antibody Pair, PBS Only. Capture antibody: 83600-6-PBS. Detection antibody: 83600-4-PBS. Standard: Eg1114. Range: 0.156-20 ng/mL