

PD-L1/CD274 Recombinant antibody

Catalog Number: 83600-2-RR

Basic Information

Catalog Number:

83600-2-RR

Size:

1000 ug/ml

Source:

Rabbit

Isotype:

IgG

GenBank Accession Number:

BC074984

GeneID (NCBI):

29126

UNIPROT ID:

Q9NZQ7

Full Name:

CD274 molecule

Calculated MW:

290 aa, 33 kDa

Observed MW:

45-50 kDa

Purification Method:

Protein A purification

CloneNo.:

240721E12

Recommended Dilutions:

WB 1:500-1:2000

IF/ICC 1:125-1:500

Applications

Tested Applications:

WB, IF/ICC, ELISA

Species Specificity:

human

Positive Controls:WB : MDA-MB-231 cells, IFN gamma treated A549 cells,
human placenta tissue

IF/ICC : MDA-MB-231 cells,

Background Information

Programmed cell death ligand 1 (PD-L1, CD274, or B7-H1), is the first member of B7 family to be discovered. B7 family molecules are type I transmembrane proteins belonging to the immunoglobulin superfamily. In concert with their CD28 family receptors, the B7s are key regulators of the adaptive immune response. PD-L1 is suggested as a negative regulator of T and B cell, and plays important role in mediating tolerance of lymphocytes to self-antigens. It is also involved in the costimulatory signal, essential for T-cell proliferation and production of IL10 and IFNG, in an IL2-dependent and a PD-1-independent manner. PD-L1 is a 290 aa transmembrane protein with a calculated molecular weight of 33 kDa, it is predicted to be 27-30 kDa after signal peptide cleavage (PMID: 25609200; 17076679). The apparent molecular weight has also been reported as 45-70 kDa, major glycosylated form of 45-50 kDa and multiple post-translational modifications form of 65-70 kDa (PMID: 18760278; 16493058).

Storage

Storage:

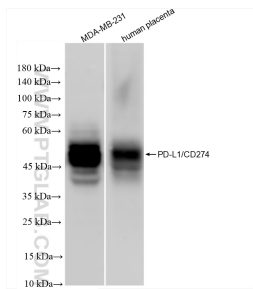
Store at -20°C. Stable for one year after shipment.

Storage Buffer:

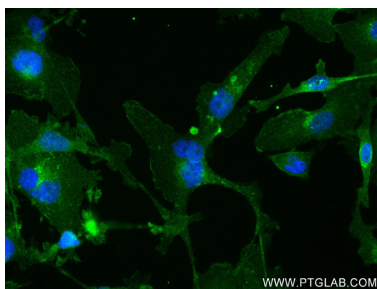
PBS with 0.02% sodium azide and 50% glycerol pH 7.3.

Aliquoting is unnecessary for -20°C storage

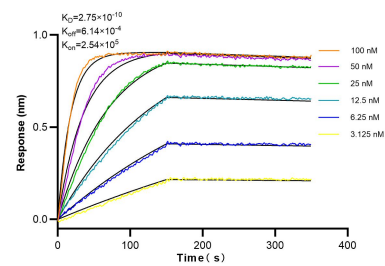
Selected Validation Data



Various lysates were subjected to SDS PAGE followed by western blot with 83600-2-RR (PD-L1/CD274 antibody) at dilution of 1:1000 incubated at room temperature for 1.5 hours.



Immunofluorescent analysis of (4% PFA) fixed MDA-MB-231 cells using PD-L1/CD274 antibody (83600-2-RR, Clone: 240721E12) at dilution of 1:250 and CoraLite®488-Conjugated AffiniPure Goat Anti-Rabbit IgG(H+L) (SA00013-2).



Biacore kinetic assay of 83600-2-RR against Human PD-L1/CD274 were performed. The affinity constant is 0.275 nM.