

For Research Use Only

# PD-L1/CD274 Recombinant antibody, PBS Only (Capture)

Catalog Number: 83600-2-PBS



## Basic Information

Catalog Number:

83600-2-PBS

Size:

1 mg/ml

Source:

Rabbit

Isotype:

IgG

GenBank Accession Number:

BC074984

GeneID (NCBI):

29126

UNIPROT ID:

Q9NZQ7

Full Name:

CD274 molecule

Calculated MW:

290 aa, 33 kDa

Purification Method:

Protein A purification

CloneNo.:

240721E12

## Applications

Tested Applications:

WB, IF/ICC, Cytometric bead array, Indirect ELISA

Species Specificity:

human

## Background Information

### Storage

Storage:

Store at -80°C.

The product is shipped with ice packs. Upon receipt, store it immediately at -80°C

Storage Buffer:

PBS Only

For technical support and original validation data for this product please contact:

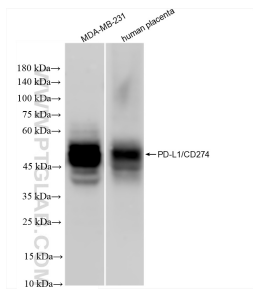
T: 4006900926

E: [Proteintech-CN@ptglab.com](mailto:Proteintech-CN@ptglab.com)

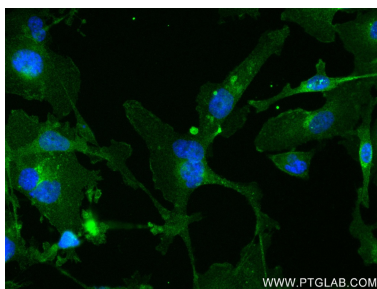
W: [ptgcn.com](http://ptgcn.com)

This product is exclusively available under Proteintech Group brand and is not available to purchase from any other manufacturer.

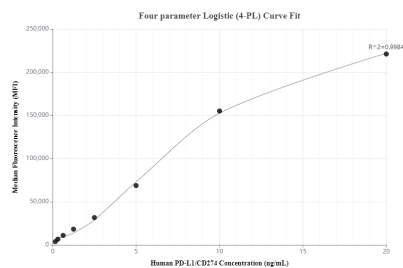
## Selected Validation Data



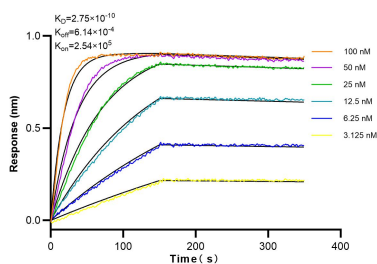
Various lysates were subjected to SDS PAGE followed by western blot with 83600-2-RR (PD-L1/CD274 antibody) at dilution of 1:1000 incubated at room temperature for 1.5 hours. This data was developed using the same antibody clone with 83600-2-PBS in a different storage buffer formulation.



Immunofluorescent analysis of (4% PFA) fixed MDA-MB-231 cells using PD-L1/CD274 antibody (83600-2-RR, Clone: 240721E12 ) at dilution of 1:250 and CoraLite®488-Conjugated AffiniPure Goat Anti-Rabbit IgG(H+L) (SA00013-2). This data was developed using the same antibody clone with 83600-2-PBS in a different storage buffer formulation.



Cytometric bead array standard curve of MP00601-1, PD-L1/CD274 Recombinant Matched Antibody Pair, PBS Only. Capture antibody: 83600-2-PBS. Detection antibody: 83600-5-PBS. Standard: Eg1114. Range: 0.156-20 ng/mL



Bioluminescence resonance energy transfer (BLI) kinetic assays of 83600-2-RR against Human PD-L1/CD274 were performed. The affinity constant is 0.275 nM.