

For Research Use Only

# BARHL2 Recombinant antibody, PBS Only (Detector)

Catalog Number: 83596-4-PBS



## Basic Information

Catalog Number:	83596-4-PBS	GenBank Accession Number:	BC126439	Purification Method:	Protein A purification
Size:	1 mg/ml	GeneID (NCBI):	343472	CloneNo.:	240558G8
Source:	Rabbit	UNIPROT ID:	Q9NY43		
Isotype:	IgG	Full Name:	BarH-like homeobox 2		
Immunogen Catalog Number:	AG21156	Calculated MW:	387 aa, 42 kDa		
		Observed MW:	42 kDa		

## Applications

**Tested Applications:**  
WB, IF/ICC, Cytometric bead array, Indirect ELISA

**Species Specificity:**  
human, mouse, rat

## Background Information

BARHL2 also named as BarH like homeobox 2 is 279 amino acid protein, which contains 1 homeobox DNA-binding domain. BARHL2 localizes in nucleus and belongs to BAR homeobox family. BARHL2 as a transcription factor binds optimally to the DNA consensus sequence. Barx2 may differentially control the expression of L1 and other target genes during embryonic development. Barx2 is expressed in several smooth muscle-containing tissues, as well as skeletal muscle, brain, tongue and esophagus.

## Storage

**Storage:**  
Store at -80°C.

**The product is shipped with ice packs. Upon receipt, store it immediately at -80°C**

**Storage Buffer:**  
PBS Only

For technical support and original validation data for this product please contact:

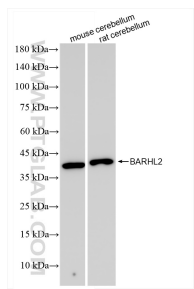
T: 4006900926

E: Proteintech-CN@ptglab.com

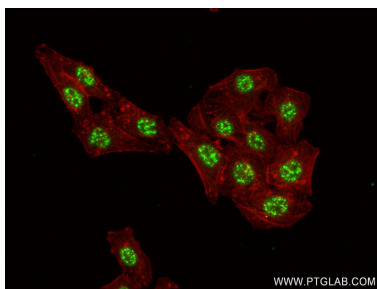
W: ptgcn.com

**This product is exclusively available under Proteintech Group brand and is not available to purchase from any other manufacturer.**

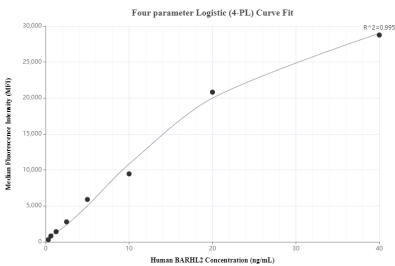
## Selected Validation Data



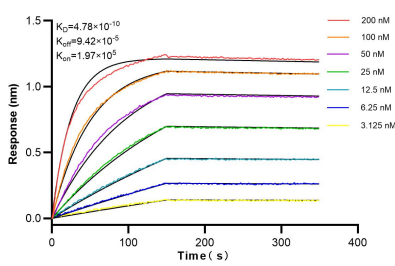
mouse cerebellum tissue were subjected to SDS PAGE followed by western blot with 83596-4-RR (BARHL2 antibody) at dilution of 1:1000 incubated at room temperature for 1.5 hours. This data was developed using the same antibody clone with 83596-4-PBS in a different storage buffer formulation.



Immunofluorescent analysis of (4% PFA) fixed HepG2 cells using BARHL2 antibody (83596-4-RR, Clone: 240558G8 ) at dilution of 1:250 and CoraLite@488-Conjugated AffiniPure Goat Anti-Rabbit IgG(H+L) (SA00013-2), CL594-Phalloidin (red). This data was developed using the same antibody clone with 83596-4-PBS in a different storage buffer formulation.



Cytometric bead array standard curve of MP00582-2, BARHL2 Recombinant Matched Antibody Pair, PBS Only. Capture antibody: 83596-1-PBS. Detection antibody: 83596-4-PBS. Standard: Ag21156. Range: 0.313-40 ng/mL



Biolayer interferometry (BLI) kinetic assays of 83596-4-RR against Human BARHL2 were performed. The affinity constant is 0.478 nM.

Immunofluorescent analysis of (4% PFA) fixed HepG2 cells using BARHL2 antibody (83596-4-RR, Clone: 240558G8 ) at dilution of 1:1000 and CoraLite@488-Conjugated Goat Anti-Rabbit IgG(H+L) (SA00013-2), CL594-Phalloidin (red). This data was developed using the same antibody clone with 83596-4-PBS in a different storage buffer formulation.