

For Research Use Only

KMT2C Recombinant antibody, PBS Only

Catalog Number: 83595-4-PBS



Basic Information

Catalog Number: 83595-4-PBS	GenBank Accession Number: NM_170606	Purification Method: Protein A purification
Concentration: 1 mg/ml	GeneID (NCBI): 58508	CloneNo.: 240542A2
Source: Rabbit	UNIPROT ID: Q8NEZ4	
Isotype: IgG	Full Name: myeloid/lymphoid or mixed-lineage leukemia 3	
Immunogen Catalog Number: AG28875	Calculated MW: 541 kDa	

Applications

Tested Applications:
IF/ICC, FC (Intra), ELISA

Species Specificity:
human

Background Information

Lysine (K)-specific methyltransferase 2C (KMT2C, also known as MLL3) belongs to the mixed-lineage leukemia (MLL) family of histone methyltransferases which methylate the histone 3 tail at lysine 4 (H3K4) as part of the complex proteins associated with Set 1 (COMPASS) complex. Although originally identified as oncogenic fusions in leukemia, genome-wide mutation studies have revealed frequent, presumably loss-of-function, mutations in various members of the MLL family, including MLL2/KMT2B, MLL3/KMT2C, and MLL4/KMT2D in a variety of malignancies, particularly solid tumors. Mechanistic studies of KMT2C in normal cells have focused primarily on its role in enhancer regulation by deposition of H3K4me1 marks.

Storage

Storage:
Store at -80°C.
The product is shipped with ice packs. Upon receipt, store it immediately at -80°C

Storage Buffer:
PBS Only

For technical support and original validation data for this product please contact:

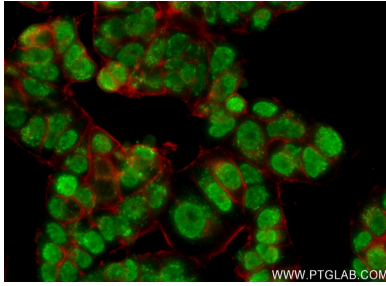
T: 4006900926

E: Proteintech-CN@ptglab.com

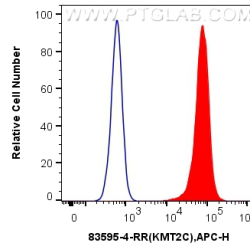
W: ptgcn.com

This product is exclusively available under Proteintech Group brand and is not available to purchase from any other manufacturer.

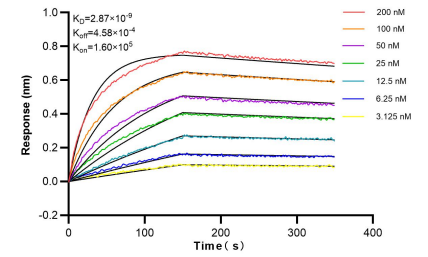
Selected Validation Data



Immunofluorescent analysis of (4% PFA) fixed MCF-7 cells using KMT2C antibody (83595-4-RR, Clone: 240542A2) at dilution of 1:250 and CoraLite®488-Conjugated AffiniPure Goat Anti-Mouse IgG(H+L) (SA00013-1), CL594-Phalloidin (green). This data was developed using the same antibody clone with 83595-4-PBS in a different storage buffer formulation.



1×10^6 U2OS cells were intracellularly stained with 0.25 μ g KMT2C Recombinant antibody (83595-4-RR, Clone: 240542A2) and APC-Conjugated AffiniPure Goat Anti-Rabbit IgG(H+L)(red), or 0.25 μ g Isotype Control (blue). Cells were fixed and permeabilized with Transcription Factor Staining Buffer Kit (PF00011). This data was developed using the same antibody clone with 83595-4-PBS in a different storage buffer formulation.



Biolayer interferometry (BLI) kinetic assays of 83595-4-RR against Human KMT2C were performed. The affinity constant is 2.67 nM.