

SENP1 Recombinant antibody

Catalog Number: 83594-1-RR

Basic Information

Catalog Number:	83594-1-RR	GenBank Accession Number:	BC045639	Purification Method:	Protein A purification
Size:	1000 ug/ml	GeneID (NCBI):	29843	CloneNo.:	240478F3
Source:	Rabbit	UNIPROT ID:	Q9P0U3	Recommended Dilutions:	IHC 1:50-1:500 IF/ICC 1:125-1:500
Isotype:	IgG	Full Name:	SUMO1/sentrin specific peptidase 1		
Immunogen Catalog Number:	AG18028	Calculated MW:	644 aa, 73 kDa		

Applications

Tested Applications:	IHC, IF/ICC, FC (Intra), ELISA	Positive Controls:	
Species Specificity:	human	IHC :	human intrahepatic cholangiocarcinoma tissue,
		IF/ICC :	A431 cells,
Note-IHC: suggested antigen retrieval with TE buffer pH 9.0; (*) Alternatively, antigen retrieval may be performed with citrate buffer pH 6.0			

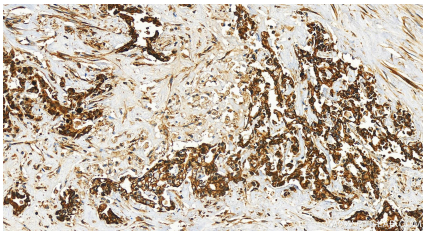
Background Information

SENP1, Sentrin-specific protease 1, is a cysteine protease that specifically targets members of the small ubiquitin-like modifier (SUMO) protein family. SENP1 catalyzes two functions in the SUMO pathway (PMID: 29506078). The first is the hydrolysis of an alpha-linked peptide bond at the C-terminal end of the small ubiquitin-like modifier (SUMO) propeptides. The second is the deconjugation of SUMO1, SUMO2 and SUMO3 from targeted proteins (PMID: 16253240). SENP1 is located in the nucleus and cytosol.

Storage

Storage:
Store at -20°C. Stable for one year after shipment.
Storage Buffer:
PBS with 0.02% sodium azide and 50% glycerol pH 7.3.
Aliquoting is unnecessary for -20°C storage

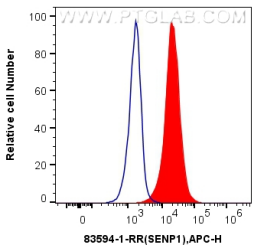
Selected Validation Data



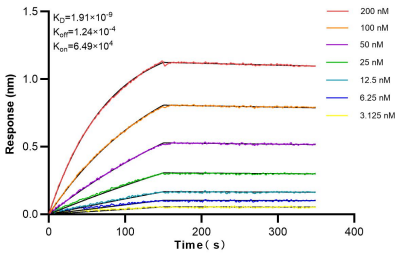
Immunohistochemical analysis of paraffin-embedded human intrahepatic cholangiocarcinoma tissue slide using 83594-1-RR (SENP1 antibody) at dilution of 1:200 (under 20x lens). Heat mediated antigen retrieval with Tris-EDTA buffer (pH 9.0).



Immunofluorescent analysis of (4% PFA) fixed A431 cells using SENP1 antibody (83594-1-RR, Clone: 240478F3) at dilution of 1:250 and CoraLite®488-Conjugated AffiniPure Goat Anti-Rabbit IgG(H+L) (SA00013-2), CL594-Phalloidin (red).



1x10⁶ HeLa cells were intracellularly stained with 0.25 ug SENP1 Recombinant antibody (83594-1-RR, Clone:240478F3) and APC-Conjugated AffiniPure Goat Anti-Rabbit IgG(H+L)(red), or 0.25 ug Isotype Control (blue). Cells were fixed and permeabilized with Transcription Factor Staining Buffer Kit (PF00011).



Bi-layer interferometry (BLI) kinetic assays of 83594-1-RR against Human SENP1 were performed. The affinity constant is 1.91 nM.