

For Research Use Only

# PEBP4 Recombinant antibody, PBS Only (Detector)

Catalog Number: 83589-6-PBS



## Basic Information

Catalog Number:

83589-6-PBS

Size:

1 mg/ml

Source:

Rabbit

Isotype:

IgG

Immunogen Catalog Number:

AG9710

GenBank Accession Number:

BC020779

GeneID (NCBI):

157310

UNIPROT ID:

Q96S96

Full Name:

phosphatidylethanolamine-binding protein 4

Calculated MW:

223 aa, 25 kDa

Purification Method:

Protein A purification

CloneNo.:

240547B9

## Applications

Tested Applications:

Sandwich ELISA, Indirect ELISA, Sample test

Species Specificity:

human

## Background Information

### Storage

Storage:

Store at -80°C.

The product is shipped with ice packs. Upon receipt, store it immediately at -80°C

Storage Buffer:

PBS Only

For technical support and original validation data for this product please contact:

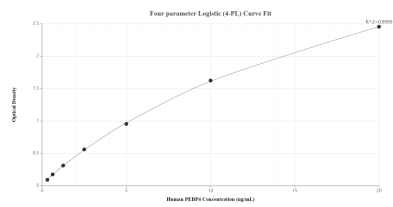
T: 4006900926

E: Proteintech-CN@ptglab.com

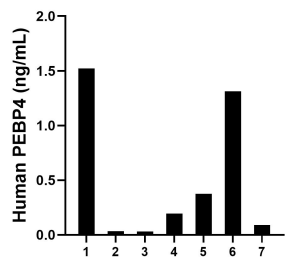
W: ptgcn.com

This product is exclusively available under Proteintech Group brand and is not available to purchase from any other manufacturer.

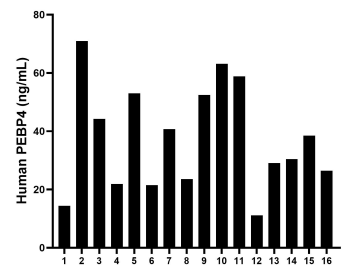
# Selected Validation Data



Sandwich ELISA standard curve of MP00574-4, Human PEBP4 Recombinant Matched Antibody Pair - PBS only. 83589-7-PBS was coated to a plate as the capture antibody and incubated with serial dilutions of standard Ag9710. 83589-6-PBS was HRP conjugated as the detection antibody. Range: 0.313-20 ng/mL



Urine of seven individual healthy human donors was measured. The PEBP4 concentration of detected samples was determined to be 0.51 ng/mL with a range of 0.09-1.52 ng/mL.



Serum of sixteen individual healthy human donors was measured. The PEBP4 concentration of detected samples was determined to be 37.5 ng/mL with a range of 11.15-70.94 ng/mL.