

For Research Use Only

LUC7L Recombinant antibody

Catalog Number: 83585-1-RR

Featured Product



Basic Information

Catalog Number:

83585-1-RR

Concentration:

1000 ug/ml

Source:

Rabbit

Isotype:

IgG

Immunogen Catalog Number:

AG9170

GenBank Accession Number:

BC065198

GeneID (NCBI):

55692

UNIPROT ID:

Q9NQ29

Full Name:

LUC7-like (*S. cerevisiae*)

Calculated MW:

44 kDa

Observed MW:

38 kDa and 44 kDa

Purification Method:

Protein A purification

CloneNo.:

240311B10

Recommended Dilutions:

WB 1:5000-1:50000

IHC 1:200-1:800

IF/ICC 1:150-1:600

Applications

Tested Applications:

WB, IHC, IF/ICC, FC (Intra), ELISA

Species Specificity:

human, mouse, rat

Note-IHC: suggested antigen retrieval with TE buffer pH 9.0; (*) Alternatively, antigen retrieval may be performed with citrate buffer pH 6.0

Positive Controls:

WB : HeLa cells, HepG2 cells, Jurkat cells, K-562 cells, U-251 cells, mouse brain tissue, rat brain tissue

IHC : rat brain tissue,

IF/ICC : HepG2 cells,

Background Information

LUC7L, also known as LUC7L1, belongs to the Luc7 family. LUC7L encodes a putative RNA binding protein similar to the yeast Luc7p subunit of the U1 snRNP splicing complex, which is normally required for 5' splice site selection (PMID: 15474286). LUC7L is widely expressed. LUC7L has 3 isoforms with the molecular mass of 38, 42 and 44 kDa.

Storage

Storage:

Store at -20°C. Stable for one year after shipment.

Storage Buffer:

PBS with 0.02% sodium azide and 50% glycerol pH 7.3.

Aliquoting is unnecessary for -20°C storage

For technical support and original validation data for this product please contact:

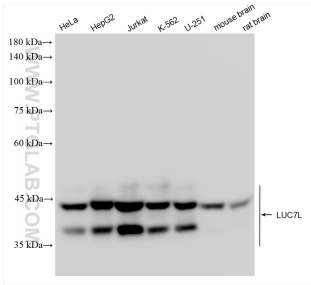
T: 4006900926

E: Proteintech-CN@ptglab.com

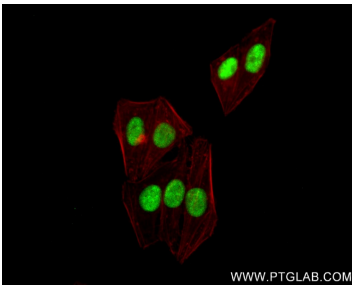
W: ptgcn.com

This product is exclusively available under Proteintech Group brand and is not available to purchase from any other manufacturer.

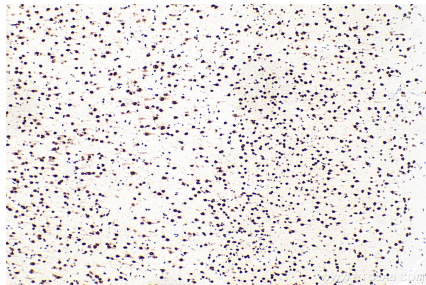
Selected Validation Data



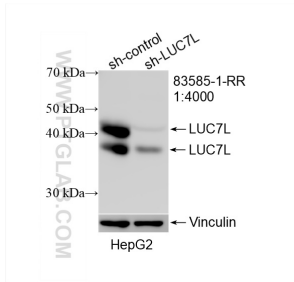
Various lysates were subjected to SDS PAGE followed by western blot with 83585-1-RR (LUC7L antibody) at dilution of 1:10000 incubated at room temperature for 1.5 hours.



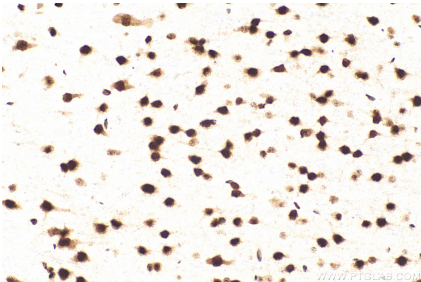
Immunofluorescent analysis of (4% PFA) fixed HepG2 cells using LUC7L antibody (83585-1-RR, Clone: 240311B10) at dilution of 1:300 and CoraLite®488-Conjugated AffiniPure Goat Anti-Rabbit IgG(H+L) (SA00013-2), CL594-Phalloidin (red).



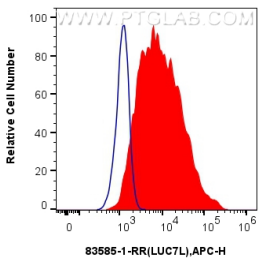
Immunohistochemical analysis of paraffin-embedded rat brain tissue slide using 83585-1-RR (LUC7L antibody) at dilution of 1:400 (under 10x lens). Heat mediated antigen retrieval with Tris-EDTA buffer (pH 9.0).



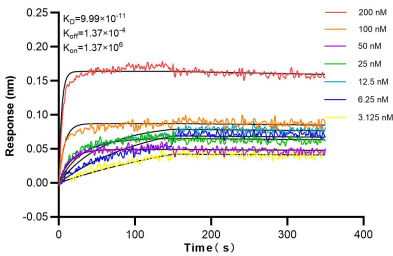
WB result of LUC7L antibody (83585-1-RR; 1:4000; incubated at room temperature for 1.5 hours) with sh-Control and sh-LUC7L transfected HepG2 cells.



Immunohistochemical analysis of paraffin-embedded rat brain tissue slide using 83585-1-RR (LUC7L antibody) at dilution of 1:400 (under 40x lens). Heat mediated antigen retrieval with Tris-EDTA buffer (pH 9.0).



1x10⁶ MCF-7 cells were intracellularly stained with 0.25 ug LUC7L Recombinant antibody (83585-1-RR, Clone:240311B10) and APC-Conjugated AffiniPure Goat Anti-Rabbit IgG(H+L)(red), or 0.25 ug Isotype Control (blue). Cells were fixed and permeabilized with Transcription Factor Staining Buffer Kit (PF00011).



Biolayer interferometry (BLI) kinetic assays of 83585-1-RR against Human LUC7L were performed. The affinity constant is 99.9 pM.