

For Research Use Only

# S100A9 Recombinant antibody, PBS Only (Capture)

Catalog Number: 83578-2-PBS



## Basic Information

<b>Catalog Number:</b> 83578-2-PBS	<b>GenBank Accession Number:</b> BC047681	<b>Purification Method:</b> Protein A purification
<b>Size:</b> 1 mg/ml	<b>GeneID (NCBI):</b> 6280	<b>CloneNo.:</b> 240539G9
<b>Source:</b> Rabbit	<b>UNIPROT ID:</b> P06702	<b>Recommended Dilutions:</b> WB 1:1000-1:4000
<b>Isotype:</b> IgG	<b>Full Name:</b> S100 calcium binding protein A9	
<b>Immunogen Catalog Number:</b> AG25764	<b>Calculated MW:</b> 13 kDa	
	<b>Observed MW:</b> 14 kDa	

## Applications

<b>Tested Applications:</b> WB, IF/ICC, Cytometric bead array, Indirect ELISA	<b>Positive Controls:</b> WB : THP-1 cells, MCF-7 cells, HL-60 cells
<b>Species Specificity:</b> human	

## Background Information

S100A9 is a calcium binding protein as a member of the S100 family of proteins. S100 proteins are low molecular weight (9 to 14 kDa) intracellular calcium-binding proteins that control key cellular pathways including regulation of the cytoskeleton, cell migration and adhesion, and host oxidative defense. S100A9 may exist as a homodimer, heterodimer with an S100A8 partner (S100A8/A9), or as a heterotetramer with an S100A8 partner (S100A8/A9). S100A8 and S100A9 are found intracellularly in granulocytes, monocytes, and early differentiation stages of macrophages.

## Storage

**Storage:**  
Store at -80°C.  
**The product is shipped with ice packs. Upon receipt, store it immediately at -80°C**  
**Storage Buffer:**  
PBS Only

For technical support and original validation data for this product please contact:

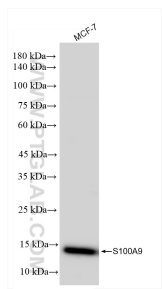
T: 4006900926

E: [Proteintech-CN@ptglab.com](mailto:Proteintech-CN@ptglab.com)

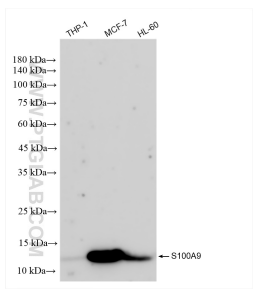
W: [ptgcn.com](http://ptgcn.com)

**This product is exclusively available under Proteintech Group brand and is not available to purchase from any other manufacturer.**

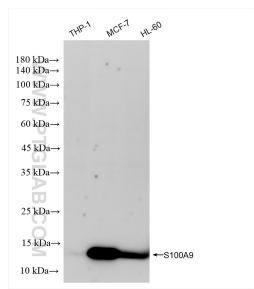
Selected Validation Data



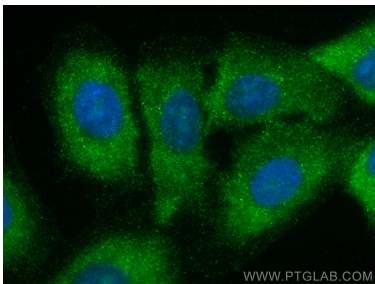
MCF-7 cells were subjected to SDS PAGE followed by western blot with 83578-2-RR (S100A9 antibody) at dilution of 1:5000 incubated at room temperature for 1.5 hours. This data was developed using the same antibody clone with 83578-2-PBS in a different storage buffer formulation.



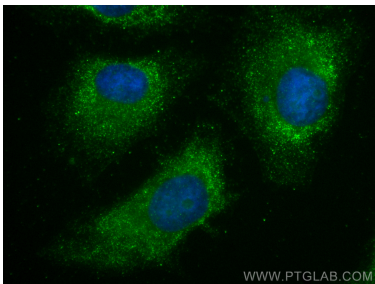
Various lysates were subjected to SDS PAGE followed by western blot with 83578-2-PBS (S100A9 antibody) at dilution of 1:2000 incubated at room temperature for 1.5 hours.



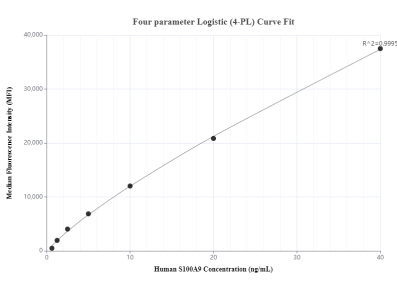
Various lysates were subjected to SDS PAGE followed by western blot with 83578-2-RR (S100A9 antibody) at dilution of 1:2000 incubated at room temperature for 1.5 hours. This data was developed using the same antibody clone with 83578-2-PBS in a different storage buffer formulation.



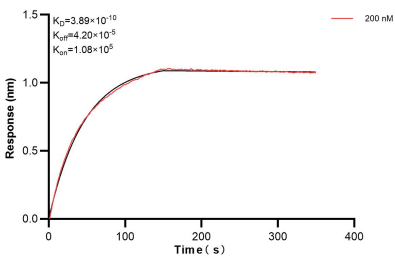
Immunofluorescent analysis of (-20°C Methanol) fixed A549 cells using S100A9 antibody (83578-2-RR, Clone: 240539G9 ) at dilution of 1:200 and Multi-rAb Coralite ® Plus 488-Goat Anti-Rabbit Recombinant Secondary Antibody (H+L) (RGAR002). This data was developed using the same antibody clone with 83578-2-PBS in a different storage buffer formulation.



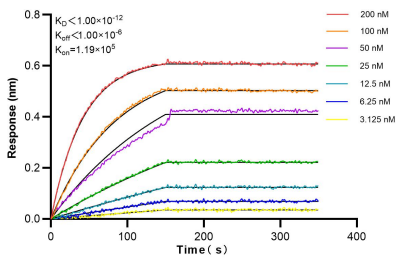
Immunofluorescent analysis of (-20°C Ethanol) fixed HeLa cells using S100A9 antibody (83578-2-RR, Clone: 240539G9 ) at dilution of 1:200 and Multi-rAb Coralite ® Plus 488-Goat Anti-Rabbit Recombinant Secondary Antibody (H+L) (RGAR002). This data was developed using the same antibody clone with 83578-2-PBS in a different storage buffer formulation.



Cytometric bead array standard curve of MP00569-3, S100A9 Recombinant Matched Antibody Pair, PBS Only. Capture antibody: 83578-2-PBS. Detection antibody: 83578-6-PBS. Standard: Ag25764. Range: 0.625-40 ng/mL.



Biolayer interferometry (BLI) kinetic assay of 83578-2-PBS against Human S100A9 was performed. The affinity constant is 0.389 nM.



Biolayer interferometry (BLI) kinetic assays of 83578-2-RR against Human S100A9 were performed. The affinity constant is below 1 pM.