

For Research Use Only

# HIBCH Recombinant antibody

Catalog Number: 83569-1-RR

Featured Product



## Basic Information

### Catalog Number:

83569-1-RR

### Concentration:

500 ug/ml

### Source:

Rabbit

### Isotype:

IgG

### Immunogen Catalog Number:

AG6149

### GenBank Accession Number:

BC067822

### GeneID (NCBI):

26275

### UNIPROT ID:

Q6NVY1

### Full Name:

3-hydroxyisobutyryl-Coenzyme A hydrolase

### Calculated MW:

43 kDa

### Observed MW:

38 kDa

### Purification Method:

Protein A purification

### CloneNo.:

240590A3

### Recommended Dilutions:

WB 1:2000-1:10000

IF/ICC 1:200-1:800

## Applications

### Tested Applications:

WB, IF/ICC, FC (Intra), ELISA

### Species Specificity:

human, rat

### Positive Controls:

WB : HEK-293 cells, HepG2 cells, HeLa cells, rat liver tissue

IF/ICC : HepG2 cells,

## Background Information

HIBCH belongs to the enoyl-CoA hydratase/isomerase family. HIBCH has two isoforms with MW 43 kDa and 38 kDa. It is highly expressed in the liver and kidney, also detected in the heart, muscle and brain (at protein level), but not detected in the lung. Hydrolyzes 3-hydroxyisobutyryl-CoA (HIBYL-CoA), a saline catabolite. Has high activity toward isobutyryl-CoA. Could be an isobutyryl-CoA dehydrogenase that functions in valine catabolism. Also hydrolyzes 3-hydroxypropanoyl-CoA (PMID: 8824301).

## Storage

### Storage:

Store at -20°C. Stable for one year after shipment.

### Storage Buffer:

PBS with 0.02% sodium azide and 50% glycerol pH 7.3.

Aliquoting is unnecessary for -20°C storage

For technical support and original validation data for this product please contact:

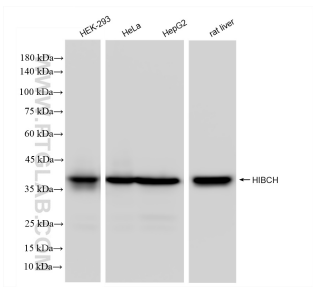
T: 4006900926

E: [Proteintech-CN@ptglab.com](mailto:Proteintech-CN@ptglab.com)

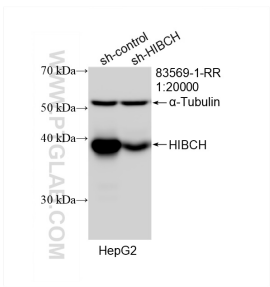
W: [ptgcn.com](http://ptgcn.com)

This product is exclusively available under Proteintech Group brand and is not available to purchase from any other manufacturer.

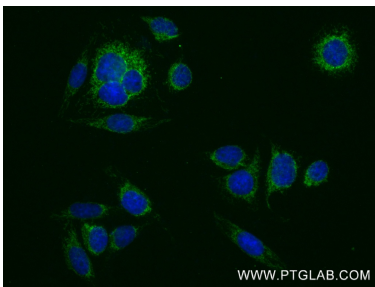
Selected Validation Data



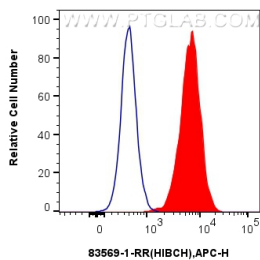
Various lysates were subjected to SDS PAGE followed by western blot with 83569-1-RR (HIBCH antibody) at dilution of 1:5000 incubated at room temperature for 1.5 hours.



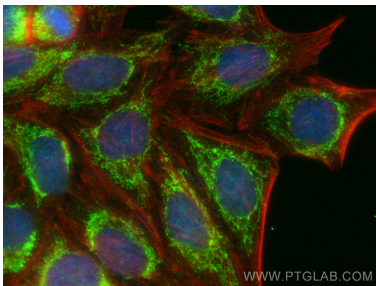
WB result of HIBCH antibody (83569-1-RR; 1:20000; incubated at room temperature for 1.5 hours) with sh-Control and sh-HIBCH transfected HepG2 cells.



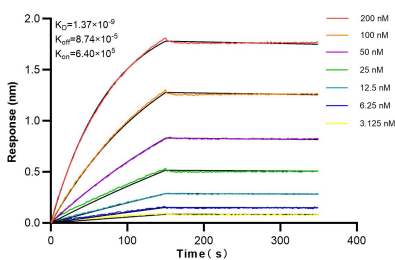
Immunofluorescent analysis of (4% PFA) fixed HepG2 cells using HIBCH antibody (83569-1-RR, Clone: 240590A3 ) at dilution of 1:200 and Multi-rAb CoraLite <sup>®</sup> Plus 488-Goat Anti-Rabbit Recombinant Secondary Antibody (H+L) (RGAR002).



1x10<sup>6</sup> HepG2 cells were intracellularly stained with 0.25  $\mu$ g HIBCH Recombinant antibody (83569-1-RR, Clone:240590A3) and APC-Conjugated AffiniPure Goat Anti-Rabbit IgG(H+L)(red), or 0.25  $\mu$ g Isotype Control (blue). Cells were fixed with 4% PFA and permeabilized with Flow Cytometry Perm Buffer (PF00011-C).



Immunofluorescent analysis of (4% PFA) fixed HepG2 cells using HIBCH antibody (83569-1-RR, Clone: 240590A3 ) at dilution of 1:400 and Multi-rAb CoraLite <sup>®</sup> Plus 488-Goat Anti-Rabbit Recombinant Secondary Antibody (H+L) (RGAR002), CL594-phalloidin (red).



Bilayer interferometry (BLI) kinetic assays of 83569-1-RR against Human HIBCH were performed. The affinity constant is 1.37 nM.