

For Research Use Only

TMEM16A/DOG1 Recombinant antibody, PBS Only (Detector)

Catalog Number: 83567-3-PBS



Basic Information

Catalog Number:

83567-3-PBS

Size:

1 mg/ml

Source:

Rabbit

Isotype:

IgG

Immunogen Catalog Number:

AG3320

GenBank Accession Number:

BC027590

GeneID (NCBI):

55107

UNIPROT ID:

Q5XXA6

Full Name:

anoctamin 1, calcium activated chloride channel

Calculated MW:

986 aa, 114 kDa

Purification Method:

Protein A purification

CloneNo.:

241464C11

Applications

Tested Applications:

Cytometric bead array, Sandwich ELISA, Indirect ELISA, Sample test

Species Specificity:

human

Background Information

Storage

Storage:

Store at -80°C.

The product is shipped with ice packs. Upon receipt, store it immediately at -80°C

Storage Buffer:

PBS Only

For technical support and original validation data for this product please contact:

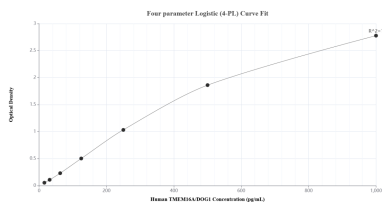
T: 4006900926

E: Proteintech-CN@ptglab.com

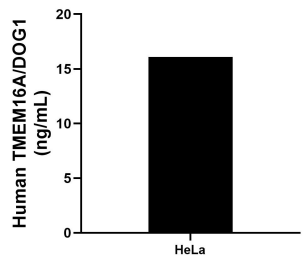
W: ptgcn.com

This product is exclusively available under Proteintech Group brand and is not available to purchase from any other manufacturer.

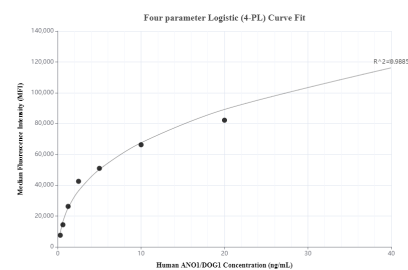
Selected Validation Data



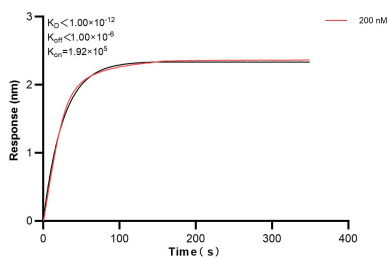
Sandwich ELISA standard curve of MP01115-3, Human TMEM16A/DOG1 Recombinant Matched Antibody Pair - PBS only. 83567-7-PBS was coated to a plate as the capture antibody and incubated with serial dilutions of standard Ag3320. 83567-3-PBS was HRP conjugated as the detection antibody. Range: 15.6-1000 pg/mL



The mean TMEM16A/DOG1 concentration was determined to be 16.1 ng/mL in HeLa cell extract based on a 1.3 mg/mL extract load.



Cytometric bead array standard curve of MP01115-1, ANO1/TMEM16A/DOG1 Recombinant Matched Antibody Pair, PBS Only. Capture antibody: 83567-5-PBS. Detection antibody: 83567-3-PBS. Standard: Ag3320. Range: 0.313-40 ng/mL



Biolayer interferometry (BLI) kinetic assay of 83567-3-PBS against Human TMEM16A/DOG1 was performed. The affinity constant is below 1 pM.