

CORIN Recombinant antibody

Catalog Number: 83566-1-RR

Basic Information

Catalog Number:	83566-1-RR	GenBank Accession Number:	BC110451	Purification Method:	Protein A purification
Size:	1000 µg/ml	GeneID (NCBI):	10699	CloneNo.:	240339A10
Source:	Rabbit	UNIPROT ID:	Q9Y5Q5	Recommended Dilutions:	WB 1:500-1:2000 IHC 1:50-1:500
Isotype:	IgG	Full Name:	corin, serine peptidase		
Immunogen Catalog Number:	AG15898	Calculated MW:	1042 aa, 117 kDa		
		Observed MW:	180 kDa		

Applications

Tested Applications:
WB, IHC, ELISASpecies Specificity:
human, mouse, rat

**Note-IHC: suggested antigen retrieval with
TE buffer pH 9.0; (*) Alternatively, antigen
retrieval may be performed with citrate
buffer pH 6.0**

Positive Controls:

WB : rat heart tissue,

IHC : mouse heart tissue,

Background Information

CORIN is a transmembrane type II serine protease expressed in cardiomyocytes that converts pro-atrial natriuretic peptide into atrial natriuretic peptide, a cardiac hormone that regulates blood pressure. CORIN can be shed into the circulation through autocleavage and metalloproteinase-mediated hydrolysis processes of the membrane form of the protein. Three different soluble fragments derived from corin molecules, with molecular masses of ~180, ~160 and ~100 kDa were described in literature (PMID: 21288900, 29387201).

Storage

Storage:

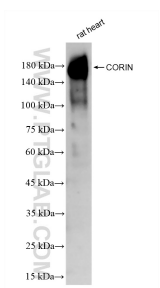
Store at -20°C. Stable for one year after shipment.

Storage Buffer:

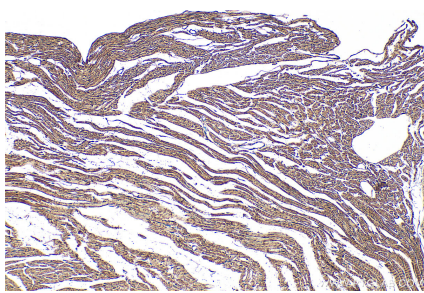
PBS with 0.02% sodium azide and 50% glycerol pH 7.3.

Aliquoting is unnecessary for -20°C storage

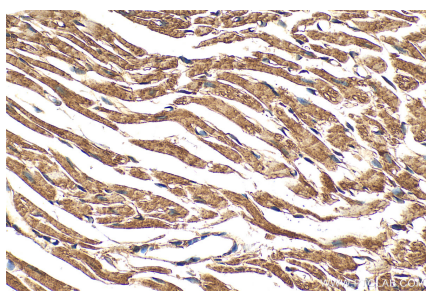
Selected Validation Data



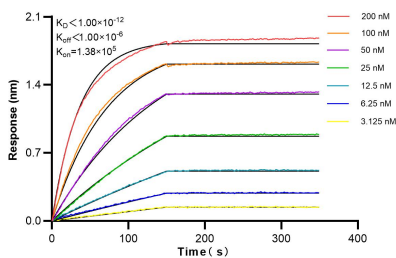
rat heart tissue were subjected to SDS PAGE followed by western blot with 83566-1-RR (CORIN antibody) at dilution of 1:1000 incubated at room temperature for 1.5 hours.



Immunohistochemical analysis of paraffin-embedded mouse heart tissue slide using 83566-1-RR (CORIN antibody) at dilution of 1:100 (under 10x lens). Heat mediated antigen retrieval with Tris-EDTA buffer (pH 9.0).



Immunohistochemical analysis of paraffin-embedded mouse heart tissue slide using 83566-1-RR (CORIN antibody) at dilution of 1:100 (under 40x lens). Heat mediated antigen retrieval with Tris-EDTA buffer (pH 9.0).



Biolayer interferometry (BLI) kinetic assays of 83566-1-RR against Human CORIN were performed. The affinity constant is below 1 pM.