

SYTL4 Recombinant antibody

Catalog Number: 83564-5-RR

Basic Information

Catalog Number:

83564-5-RR

Size:

300 µg/ml

Source:

Rabbit

Isotype:

IgG

Immunogen Catalog Number:

AG2772

GenBank Accession Number:

BC014913

GeneID (NCBI):

94121

UNIPROT ID:

Q96C24

Full Name:

synaptotagmin-like 4

Calculated MW:

671 aa, 76 kDa

Observed MW:

74-76 kDa

Purification Method:

Protein A purification

CloneNo.:

240556E2

Recommended Dilutions:

WB 1:500-1:3000

Applications

Tested Applications:

WB, ELISA

Species Specificity:

human

Positive Controls:

WB : HeLa cells, HEK-293 cells

Background Information

SYTL4, also known as SLP4 or granuphilin, is a member of the synaptotagmin-like protein (Slp) family. Members of this family are characterized by presence of an N-terminal Slp homology domain (SHD), which functions as a Rab27-binding domain, and C-terminal tandem C2 domains, putative Ca²⁺-binding motifs. SYTL4 is specifically expressed on dense-core granules in certain neuroendocrine cells and negatively controls dense-core vesicle exocytosis through specific interaction with Rab27A. (PMID: 16481396; 16473610)

Storage

Storage:

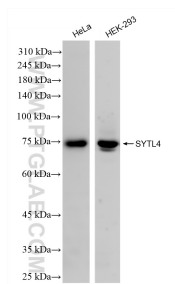
Store at -20°C. Stable for one year after shipment.

Storage Buffer:

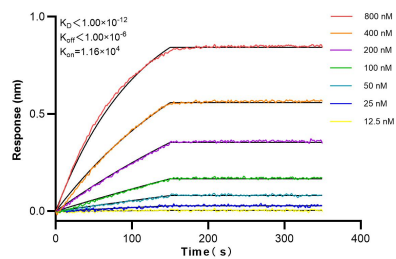
PBS with 0.02% sodium azide and 50% glycerol pH 7.3.

Aliquoting is unnecessary for -20°C storage

Selected Validation Data



Various lysates were subjected to SDS PAGE followed by western blot with 83564-5-RR (SYTL4 antibody) at dilution of 1:1500 incubated at room temperature for 1.5 hours.



Biolayer interferometry (BLI) kinetic assays of 83564-5-RR against Human SYTL4 were performed. The affinity constant is below 1 pM.