

For Research Use Only

Mouse GSDMD Recombinant antibody, PBS Only (Capture/Detector)

Catalog Number: 83562-3-PBS



Basic Information

Catalog Number: 83562-3-PBS	GenBank Accession Number: BC029813	Purification Method: Protein A purification
Size: 1 mg/ml	GeneID (NCBI): 69146	CloneNo.: 240548B10
Source: Rabbit	UNIPROT ID: Q9D8T2	
Isotype: IgG	Full Name: gasdermin D	
Immunogen Catalog Number: AG34905	Calculated MW: 53 kDa	
	Observed MW: 53 kDa	

Applications

Tested Applications:
WB, IHC, IF/ICC, FC (Intra), Cytometric bead array,
Sandwich ELISA, Indirect ELISA, Sample test

Species Specificity:
mouse

Background Information

GSDMD is a member of the gasdermin family. Members of this family appear to play a role in regulation of epithelial proliferation. GSDMD has been suggested to act as a tumor suppressor. Recently, GSDMD is identified as a new component of inflammasomes, and it is an executor of pyroptosis and required for interleukin-1 β secretion. Cleavage of GSDMD by inflammatory caspases determines pyroptotic cell death.

Storage

Storage:
Store at -80°C.
The product is shipped with ice packs. Upon receipt, store it immediately at -80°C

Storage Buffer:
PBS Only

For technical support and original validation data for this product please contact:

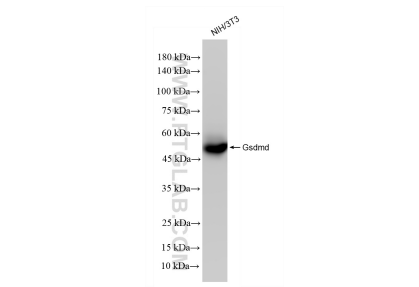
T: 4006900926

E: Proteintech-CN@ptglab.com

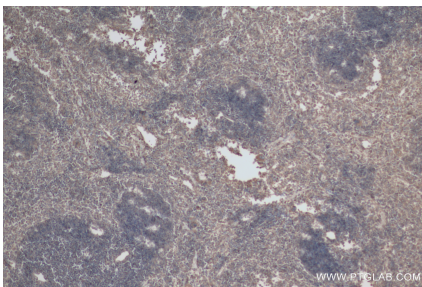
W: ptgcn.com

This product is exclusively available under Proteintech Group brand and is not available to purchase from any other manufacturer.

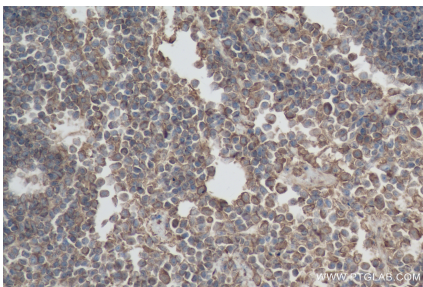
Selected Validation Data



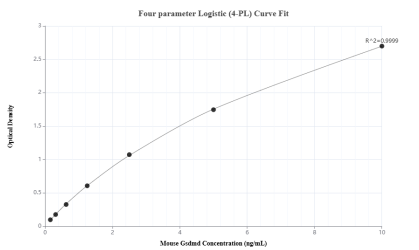
NIH/3T3 cells were subjected to SDS PAGE followed by western blot with 83562-3-RR (Gsdmd antibody) at dilution of 1:3000 incubated at room temperature for 1.5 hours. This data was developed using the same antibody clone with 83562-3-PBS in a different storage buffer formulation.



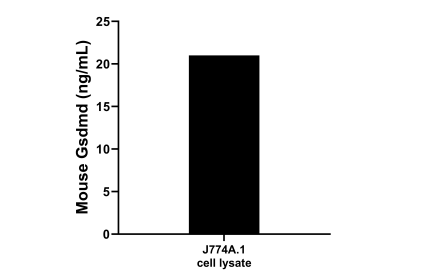
Immunohistochemical analysis of paraffin-embedded mouse spleen tissue slide using 83562-3-RR (GSDMD antibody) at dilution of 1:500 (under 10x lens). Heat mediated antigen retrieval with Tris-EDTA buffer (pH 9.0). This data was developed using the same antibody clone with 83562-3-PBS in a different storage buffer formulation.



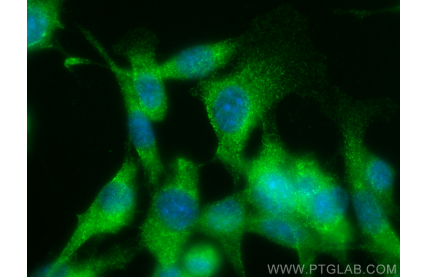
Immunohistochemical analysis of paraffin-embedded mouse spleen tissue slide using 83562-3-RR (GSDMD antibody) at dilution of 1:500 (under 40x lens). Heat mediated antigen retrieval with Tris-EDTA buffer (pH 9.0). This data was developed using the same antibody clone with 83562-3-PBS in a different storage buffer formulation.



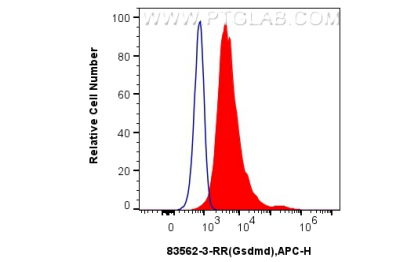
Sandwich ELISA standard curve of MP00534-2, Mouse Gsdmd Recombinant Matched Antibody Pair - PBS only. 83562-2-PBS was coated to a plate as the capture antibody and incubated with serial dilutions of standard Ag34905. 83562-3-PBS was HRP conjugated as the detection antibody. Range: 0.16-10 ng/mL



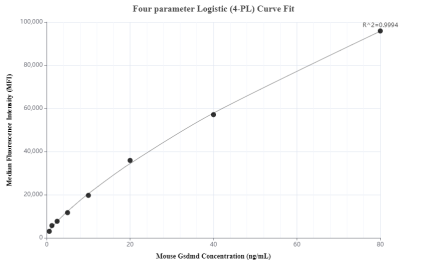
J774A.1 cell lysate was measured. The mouse Gsdmd concentration of detected samples was determined to be 21.0 ng/mL, based on a 3.4 mg/mL lysate load.



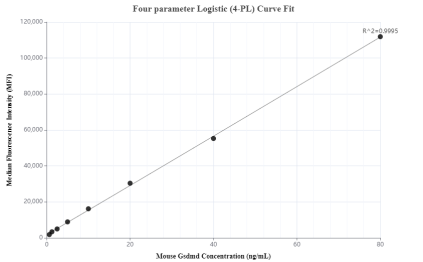
Immunofluorescent analysis of (-20°C Ethanol) fixed NIH/3T3 cells using Gsdmd antibody (83562-3-RR, Clone: 240548B10) at dilution of 1:200 and Multi-rAb CoraLite® Plus 488-Goat Anti-Rabbit Recombinant Secondary Antibody (H+L) (RGAR002). This data was developed using the same antibody clone with 83562-3-PBS in a different storage buffer formulation.



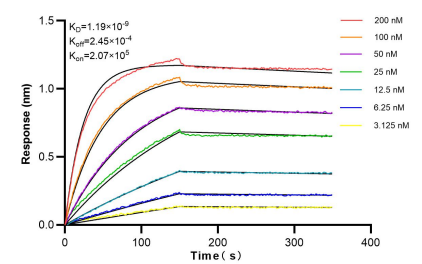
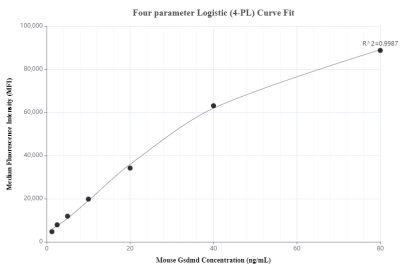
1x10⁶ RAW 264.7 cells were intracellularly stained with 0.25 ug Gsdmd Recombinant antibody (83562-3-RR, Clone:240548B10) and APC-Conjugated AffiniPure Goat Anti-Rabbit IgG(H+L) (red), or 0.25 ug Isotype Control (blue). Cells were fixed with 4% PFA and permeabilized with Flow Cytometry Perm Buffer (PF00011-C). This data was developed using the same antibody clone with 83562-3-PBS in a different storage buffer formulation.



Cytometric bead array standard curve of MP00534-1, MOUSE GSDMD Recombinant Matched Antibody Pair, PBS Only. Capture antibody: 83562-3-PBS. Detection antibody: 83562-1-PBS. Standard: Ag34905. Range: 0.625-80 ng/mL



Cytometric bead array standard curve of MP00534-2, MOUSE GSDMD Recombinant Matched Antibody Pair, PBS Only. Capture antibody: 83562-2-PBS. Detection antibody: 83562-3-PBS. Standard: Ag34905. Range: 0.625-80 ng/mL



Cytometric bead array standard curve of MP00534-3, MOUSE GSDMD Recombinant Matched Antibody Pair, PBS Only. Capture antibody: 83562-4-PBS. Detection antibody: 83562-3-PBS. Standard: Ag34905. Range: 1.25-80 ng/mL.

Biolayer interferometry (BLI) kinetic assays of 83562-3-RR against Mouse Gsdmd were performed. The affinity constant is 1.19 nM.