

MAGI2 Recombinant antibody

Catalog Number: 83561-6-RR

Basic Information

Catalog Number:

83561-6-RR

Size:

1000 µg/ml

Source:

Rabbit

Isotype:

IgG

Immunogen Catalog Number:

AG18279

GenBank Accession Number:

BC150277

GeneID (NCBI):

9863

UNIPROT ID:

Q86UL8

Full Name:

membrane associated guanylate kinase, WW and PDZ domain containing 2

Calculated MW:

1455 aa, 159 kDa

Observed MW:

140-150 kDa

Purification Method:

Protein A purification

CloneNo.:

240512C10

Recommended Dilutions:

WB 1:2000-1:10000

Applications

Tested Applications:

WB, ELISA

Species Specificity:

human, rat

Positive Controls:

WB : rat brain tissue,

Background Information

MAGI proteins are scaffolding proteins, belonging to the Membrane-Associated Guanylate Kinase Inverted proteins of the MAGUK family. There are three members of the MAGI subfamily, MAGI-1, MAGI-2, and MAGI-3. They are comprised of 6 PDZ domains, 2 WW domains, and 1 GUK domain. They have been proven to mediate the transport and signal transduction of various G protein-coupled receptors (GPCRs) (PMID: 29625175). The antibody is specific to MAGI2.

Storage

Storage:

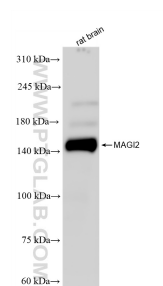
Store at -20°C. Stable for one year after shipment.

Storage Buffer:

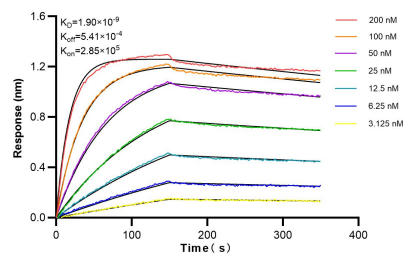
PBS with 0.02% sodium azide and 50% glycerol pH 7.3.

Aliquoting is unnecessary for -20°C storage

Selected Validation Data



rat brain tissue were subjected to SDS PAGE followed by western blot with 83561-6-RR (MAGI2 antibody) at dilution of 1:5000 incubated at room temperature for 1.5 hours.



Biolayer interferometry (BLI) kinetic assays of 83561-6-RR against Human MAGI2 were performed. The affinity constant is 1.90 nM.