

For Research Use Only

S100A14 Recombinant monoclonal antibody

Catalog Number: 83559-5-RR

Featured Product



Basic Information

Catalog Number:

83559-5-RR

Source:

Rabbit

Isotype:

IgG

Immunogen Catalog Number:

AG0757

GenBank Accession Number:

BC005019

GeneID (NCBI):

57402

UNIPROT ID:

Q9HCY8

Full Name:

S100 calcium binding protein A14

Calculated MW:

12 kDa

Observed MW:

12 kDa

Purification Method:

Protein A purification

CloneNo.:

240528B6

Recommended Dilutions:

WB: 1:2000-1:10000

IHC: 1:50-1:500

FC (Intra): 0.25 ug per 10⁶ cells in a 100 µl suspension

Applications

Tested Applications:

WB, IHC, FC (Intra), ELISA

Species Specificity:

human, mouse, rat

Note-IHC: suggested antigen retrieval with TE buffer pH 9.0; (*) Alternatively, antigen retrieval may be performed with citrate buffer pH 6.0

Positive Controls:

WB : mouse stomach tissue, MCF-7 cells, rat stomach tissues, human saliva samples

IHC : human ovary cancer tissue, human intrahepatic cholangiocarcinoma tissue

FC (Intra) : HeLa cells, MCF-7 cells

Background Information

The S100 family is a multifunctional group of EF-hand type calciumbinding proteins. S100A14 protein (previously known as BCMP84, S100A15) is a recently identified member of the S100 family. It is differentially expressed in a number of different human malignancies like ovary, breast, uterus, kidney, rectum and colon cancers, and esophageal and oral squamous cell carcinomas (OSCCs).⁷

Storage

Storage:

Store at -20°C. Stable for one year after shipment.

Storage Buffer:

PBS with 0.02% sodium azide and 50% glycerol, pH7.3

Aliquoting is unnecessary for -20°C storage

For technical support and original validation data for this product please contact:

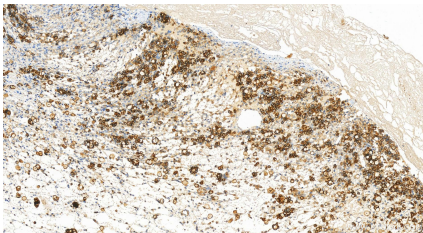
T: 4006900926

E: Proteintech-CN@ptglab.com

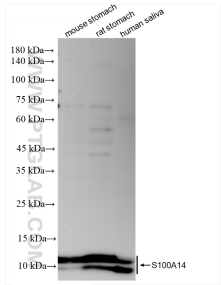
W: ptgcn.com

This product is exclusively available under Proteintech Group brand and is not available to purchase from any other manufacturer.

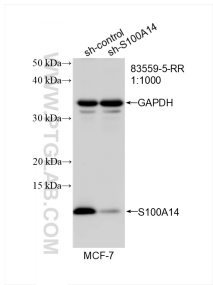
Selected Validation Data



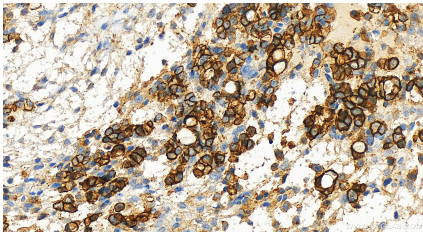
Immunohistochemical analysis of paraffin-embedded human ovary cancer tissue slide using 83559-5-RR (S100A14 antibody) at dilution of 1:200 (under 20x lens). Heat mediated antigen retrieval with Tris-EDTA buffer (pH 9.0).



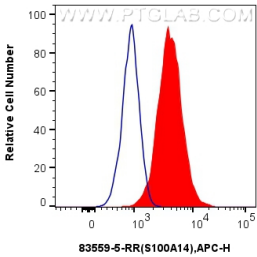
Various lysates were subjected to SDS PAGE followed by western blot with 83559-5-RR (S100A14 antibody) at dilution of 1:5000 incubated at room temperature for 1.5 hours.



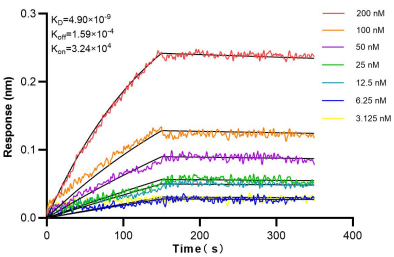
WB result of S100A14 antibody (83559-5-RR; 1:1000; incubated at room temperature for 1.5 hours) with sh-Control and sh-S100A14 transfected MCF-7 cells.



Immunohistochemical analysis of paraffin-embedded human ovary cancer tissue slide using 83559-5-RR (S100A14 antibody) at dilution of 1:200 (under 20x lens). Heat mediated antigen retrieval with Tris-EDTA buffer (pH 9.0).



1x10⁶ HeLa cells were intracellularly stained with 0.25 ug S100A14 Recombinant antibody (83559-5-RR, Clone:240528B6) and APC-Conjugated AffiniPure Goat Anti-Rabbit IgG(H+L)(red), or 0.25 ug Isotype Control (blue). Cells were fixed with 4% PFA and permeabilized with Flow Cytometry Perm Buffer.



Biolayer interferometry (BLI) kinetic assays of 83559-5-RR against Human S100A14 were performed. The affinity constant is 4.90 nM.