

For Research Use Only

# GPR161 Recombinant monoclonal antibody

Catalog Number: 83557-6-RR



## Basic Information

Catalog Number:

83557-6-RR

Source:

Rabbit

Isotype:

IgG

GenBank Accession Number:

BC028163

GeneID (NCBI):

23432

UNIPROT ID:

Q8N6U8

Full Name:

G protein-coupled receptor 161

Calculated MW:

529 aa, 59 kDa

Observed MW:

59 kDa

Purification Method:

Protein A purification

CloneNo.:

252242F4

Recommended Dilutions:

WB: 1:1000-1:4000

## Applications

Tested Applications:

WB, ELISA

Species Specificity:

human, mouse, rat

Positive Controls:

WB : HaCaT cells, 5637 cells, hTERT-RPE1 cells, NIH/3T3 cells, mouse brain tissue, rat brain tissue

## Background Information

### Storage

Storage:

Store at -20°C. Stable for one year after shipment.

Storage Buffer:

PBS with 0.02% sodium azide and 50% glycerol, pH7.3

Aliquoting is unnecessary for -20°C storage

For technical support and original validation data for this product please contact:

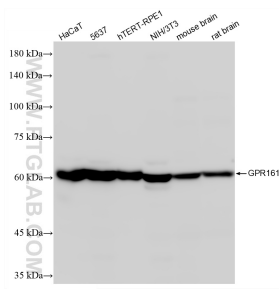
T: 4006900926

E: [Proteintech-CN@ptglab.com](mailto:Proteintech-CN@ptglab.com)

W: [ptgcn.com](http://ptgcn.com)

This product is exclusively available under Proteintech Group brand and is not available to purchase from any other manufacturer.

## Selected Validation Data



Various lysates were subjected to SDS PAGE followed by western blot with 83557-6-RR (GPR161 antibody) at dilution of 1:2000 incubated at room temperature for 1.5 hours.