

For Research Use Only

LONP1 Recombinant antibody, PBS Only (Capture)



Catalog Number: 83552-3-PBS

Basic Information

Catalog Number: 83552-3-PBS	GenBank Accession Number: BC000235	Purification Method: Protein A purification
Size: 1 mg/ml	GeneID (NCBI): 9361	CloneNo.: 240460E5
Source: Rabbit	UNIPROT ID: P36776	
Isotype: IgG	Full Name: lon peptidase 1, mitochondrial	
Immunogen Catalog Number: AG7196	Calculated MW: 106 kDa	

Applications

Tested Applications:
Cytometric bead array, Indirect ELISA, IF/ICC

Species Specificity:
human

Background Information

Storage

Storage:
Store at -80°C.
The product is shipped with ice packs. Upon receipt, store it immediately at -80°C

Storage Buffer:
PBS Only

For technical support and original validation data for this product please contact:

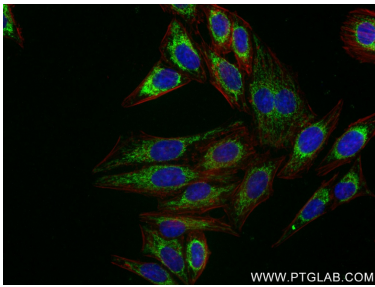
T: 4006900926

E: Proteintech-CN@ptglab.com

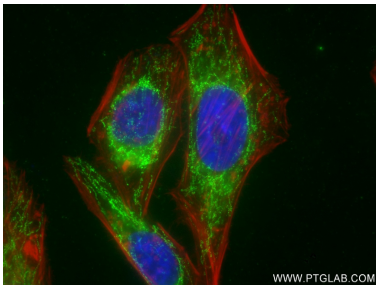
W: ptgcn.com

This product is exclusively available under Proteintech Group brand and is not available to purchase from any other manufacturer.

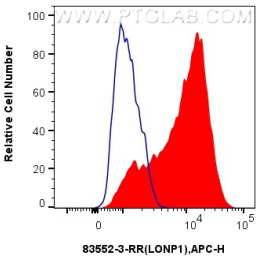
Selected Validation Data



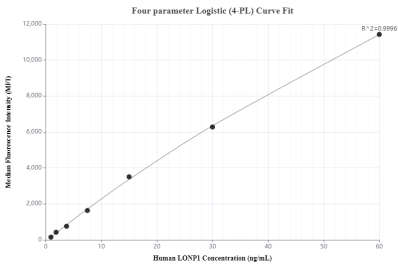
Immunofluorescent analysis of (4% PFA) fixed HepG2 cells using LONP1 antibody (83552-3-RR, Clone: 240460E5) at dilution of 1:400 and CoraLite®488-Conjugated AffiniPure Goat Anti-Rabbit IgG(H+L) (SA00013-2), CL594-Phalloidin (red). This data was developed using the same antibody clone with 83552-3-PBS in a different storage buffer formulation.



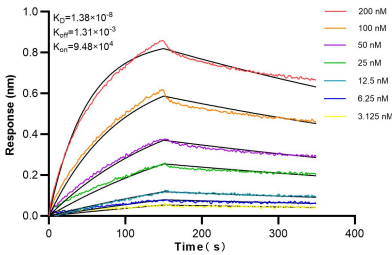
Immunofluorescent analysis of (4% PFA) fixed HepG2 cells using LONP1 antibody (83552-3-RR, Clone: 240460E5) at dilution of 1:400 and CoraLite®488-Conjugated AffiniPure Goat Anti-Rabbit IgG(H+L) (SA00013-2), CL594-Phalloidin (red). This data was developed using the same antibody clone with 83552-3-PBS in a different storage buffer formulation.



1x10⁶ HeLa cells were intracellularly stained with 0.25 ug LONP1 Recombinant antibody (83552-3-RR, Clone:240460E5) and APC-Conjugated AffiniPure Goat Anti-Rabbit IgG(H+L)(red), or 0.25 ug Isotype Control (blue). Cells were fixed with 4% PFA and permeabilized with Flow Cytometry Perm Buffer (PF00011-C). This data was developed using the same antibody clone with 83552-3-PBS in a different storage buffer formulation.



Cytometric bead array standard curve of MP00531-3, LONP1 Recombinant Matched Antibody Pair, PBS Only. Capture antibody: 83552-3-PBS. Detection antibody: 83552-1-PBS. Standard: Ag7196. Range: 0.938-60 ng/mL



Biolayer interferometry (BLI) kinetic assays of 83552-3-RR against Human LONP1 were performed. The affinity constant is 1.38 nM.