

For Research Use Only

# Mouse Chemerin Recombinant monoclonal antibody, PBS Only

Catalog Number: 83550-4-PBS



## Basic Information

Catalog Number:

83550-4-PBS

Source:

Rabbit

Isotype:

IgG

Immunogen Catalog Number:

EG0875

GenBank Accession Number:

NM\_001347168.1

GeneID (NCBI):

71660

UNIPROT ID:

Q9DD06

Full Name:

retinoic acid receptor responder  
(tazarotene induced) 2

Calculated MW:

18 kDa

Purification Method:

Protein A purification

CloneNo.:

240355A12

## Applications

Tested Applications:

WB, FC (Intra), ELISA

Species Specificity:

mouse

## Background Information

### Storage

Storage:

Store at -80°C.

The product is shipped with ice packs. Upon receipt, store it immediately at -80°C

Storage Buffer:

PBS only, pH7.3

For technical support and original validation data for this product please contact:

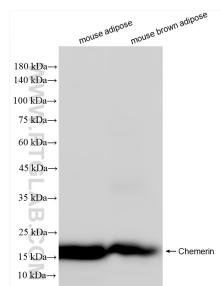
T: 4006900926

E: [Proteintech-CN@ptglab.com](mailto:Proteintech-CN@ptglab.com)

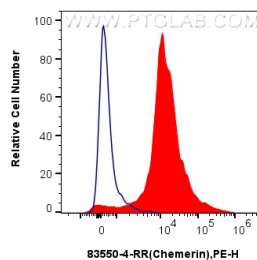
W: [ptgcn.com](http://ptgcn.com)

This product is exclusively available under Proteintech Group brand and is not available to purchase from any other manufacturer.

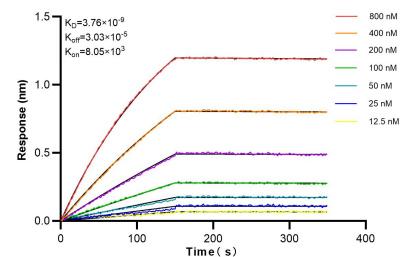
## Selected Validation Data



Various lysates were subjected to SDS PAGE followed by western blot with 83550-4-RR (Chemerin antibody) at dilution of 1:8000 incubated at room temperature for 1.5 hours. This data was developed using the same antibody clone with 83550-4-PBS in a different storage buffer formulation.



$1 \times 10^6$  C57BL/6 mouse liver cells were intracellularly stained with 0.25  $\mu$ g Chemerin Recombinant antibody (83550-4-RR, Clone:240355A12) and PE-Conjugated AffiniPure Goat Anti-Rabbit IgG(H+L)(red), or 0.25  $\mu$ g Isotype Control (blue). Cells were fixed with 4% PFA and permeabilized with Flow Cytometry Perm Buffer. This data was developed using the same antibody clone with 83550-4-PBS in a different storage buffer formulation.



Biolayer interferometry (BLI) kinetic assays of 83550-4-RR against Mouse Chemerin were performed. The affinity constant is 3.76 nM.