

For Research Use Only

Mouse Chemerin Recombinant antibody, PBS Only (Capture/Detector)

Catalog Number: 83550-2-PBS



Basic Information

Catalog Number:

83550-2-PBS

Size:

1 mg/ml

Source:

Rabbit

Isotype:

IgG

GenBank Accession Number:

NM_001347168.1

GeneID (NCBI):

71660

UNIPROT ID:

Q9DD06

Full Name:

retinoic acid receptor responder
(tazarotene induced) 2

Calculated MW:

18 kDa

Purification Method:

Protein A purification

CloneNo.:

240355D4

Applications

Tested Applications:

Cytometric bead array, Sandwich ELISA, Indirect ELISA,
Sample test

Species Specificity:

mouse

Background Information

Storage

Storage:

Store at -80°C.

The product is shipped with ice packs. Upon receipt, store it immediately at -80°C

Storage Buffer:

PBS Only

For technical support and original validation data for this product please contact:

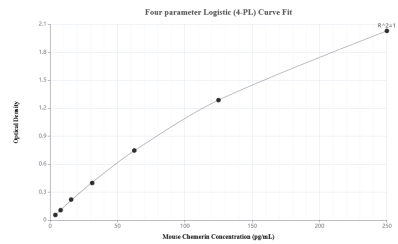
T: 4006900926

E: Proteintech-CN@ptglab.com

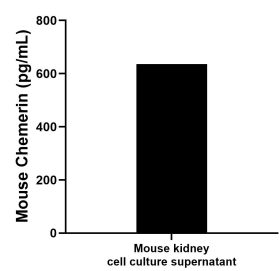
W: ptgcn.com

This product is exclusively available under Proteintech Group brand and is not available to purchase from any other manufacturer.

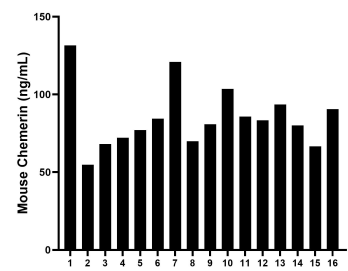
Selected Validation Data



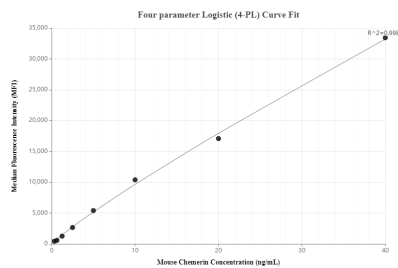
Sandwich ELISA standard curve of MP00537-3, Mouse Chemerin Recombinant Matched Antibody Pair - PBS only. 83550-1-PBS was coated to a plate as the capture antibody and incubated with serial dilutions of standard Eg0875. 83550-2-PBS was HRP conjugated as the detection antibody. Range: 3.91-250 pg/mL



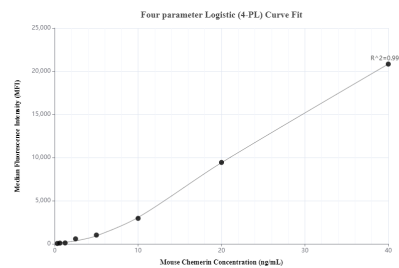
Mouse kidney tissue from one adult mouse (chopped in 1-2 mm pieces in 30 mL of medium) was cultured in RPMI supplemented with 10 % fetal calfserum and 50 μ M β -mercaptoethanol. Aliquots of the cell culture supernates were removed, assayed for levels of mouse Chemerin, and measured 636.2 pg/mL.



Serum of sixteen mice was measured. The mouse Chemerin concentration of detected samples was determined to be 85.21 ng/mL with a range of 54.83 - 131.59 ng/mL



Cytometric bead array standard curve of MP00537-1, MOUSE Chemerin Recombinant Matched Antibody Pair, PBS Only. Capture antibody: 83550-2-PBS. Detection antibody: 83550-1-PBS. Standard: Eg0875. Range: 0.313-40 ng/mL



Cytometric bead array standard curve of MP00537-2, MOUSE Chemerin Recombinant Matched Antibody Pair, PBS Only. Capture antibody: 83550-2-PBS. Detection antibody: 83550-3-PBS. Standard: Eg0875. Range: 0.313-40 ng/mL