

For Research Use Only

GHITM Recombinant monoclonal antibody, PBS Only (Detector)

Catalog Number: 83548-3-PBS



Basic Information

Catalog Number:

83548-3-PBS

Source:

Rabbit

Isotype:

IgG

Immunogen Catalog Number:

AG35170

GenBank Accession Number:

BC010354

GeneID (NCBI):

27069

UNIPROT ID:

Q9H3K2

Full Name:

growth hormone inducible
transmembrane protein

Calculated MW:

345 aa, 37 kDa

Observed MW:

37 kDa

Purification Method:

Protein A purification

CloneNo.:

240541D3

Applications

Tested Applications:

WB, FC (Intra), Cytometric bead array, Indirect ELISA

Species Specificity:

human, mouse

Background Information

GHITM, also known as MICS1, TMBIM5 or DERP2, is a mitochondrial protein that localizes in the inner membrane. GHITM is involved in mitochondrial morphology in specific cristae structures and the apoptotic release of cytochrome c from the mitochondria (PMID: 18417609). The gene of GHITM maps to chromosome 10q23.1, and encodes a 345-amino-acid protein with a calculated molecular mass of 37 kDa.

Storage

Storage:

Store at -80°C.

The product is shipped with ice packs. Upon receipt, store it immediately at -80°C

Storage Buffer:

PBS only, pH7.3

For technical support and original validation data for this product please contact:

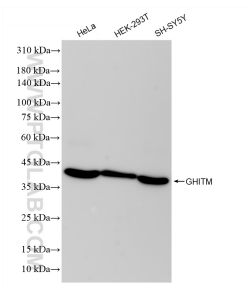
T: 4006900926

E: Proteintech-CN@ptglab.com

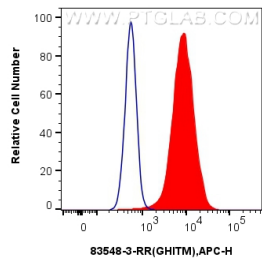
W: ptgcn.com

This product is exclusively available under Proteintech Group brand and is not available to purchase from any other manufacturer.

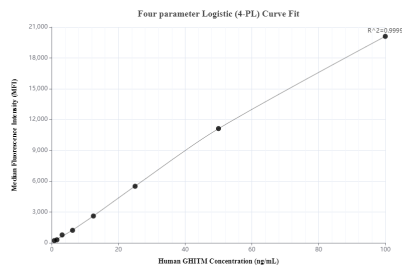
Selected Validation Data



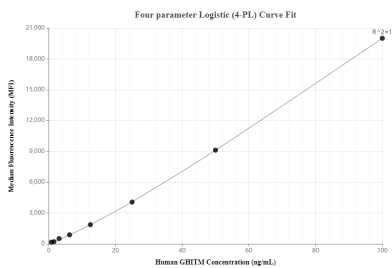
Various lysates were subjected to SDS PAGE followed by western blot with 83548-3-RR (GHITM antibody) at dilution of 1:2000 incubated at room temperature for 1.5 hours. This data was developed using the same antibody clone with 83548-3-PBS in a different storage buffer formulation.



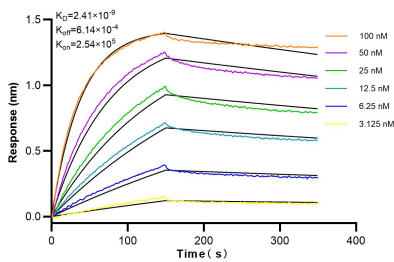
1x10⁶ HeLa cells were intracellularly stained with 0.25 ug GHITM Recombinant antibody (83548-3-RR, Clone:240541D3) and APC-Conjugated AffiniPure Goat Anti-Rabbit IgG(H+L)(red), or 0.25 ug Isotype Control (blue). Cells were fixed with 4% PFA and permeabilized with Flow Cytometry Perm Buffer. This data was developed using the same antibody clone with 83548-3-PBS in a different storage buffer formulation.



Cytometric bead array standard curve of MP00524-1, GHITM Recombinant Matched Antibody Pair, PBS Only. Capture antibody: 83548-2-PBS. Detection antibody: 83548-3-PBS. Standard: Ag35170. Range: 0.78-100 ng/mL



Cytometric bead array standard curve of MP00524-2, GHITM Recombinant Matched Antibody Pair, PBS Only. Capture antibody: 83548-1-PBS. Detection antibody: 83548-3-PBS. Standard: Ag35170. Range: 0.78-100 ng/mL



Biolayer interferometry (BLI) kinetic assays of 83548-3-RR against Human GHITM were performed. The affinity constant is 2.41 nM.