

For Research Use Only

SLC24A2 Recombinant antibody, PBS Only (Capture/Detector)



Catalog Number: 83529-2-PBS

Basic Information

Catalog Number:

83529-2-PBS

Size:

1 mg/ml

Source:

Rabbit

Isotype:

IgG

Immunogen Catalog Number:

AG35294

GenBank Accession Number:

NM_020344

GeneID (NCBI):

25769

UNIPROT ID:

Q9UI40

Full Name:

solute carrier family 24
(sodium/potassium/calcium
exchanger), member 2

Calculated MW:

661 aa, 74 kDa

Purification Method:

Protein A purification

CloneNo.:

240467F8

Applications

Tested Applications:

Indirect ELISA, Cytometric bead array

Species Specificity:

Human

Background Information

Storage

Storage:

Store at -80°C.

The product is shipped with ice packs. Upon receipt, store it immediately at -80°C

Storage Buffer:

PBS Only

For technical support and original validation data for this product please contact:

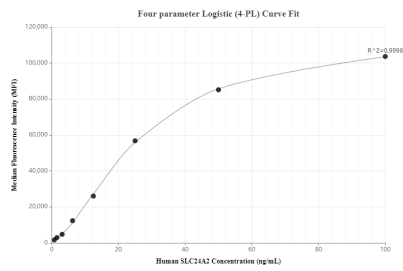
T: 4006900926

E: Proteintech-CN@ptglab.com

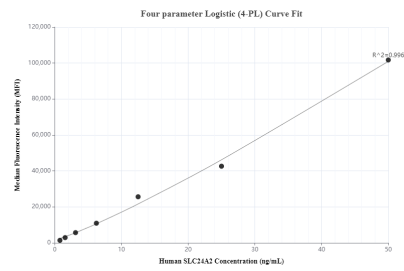
W: ptgcn.com

This product is exclusively available under Proteintech Group brand and is not available to purchase from any other manufacturer.

Selected Validation Data



Cytometric bead array standard curve of MP00501-1, SLC24A2 Recombinant Matched Antibody Pair, PBS Only. Capture antibody: 83529-3-PBS. Detection antibody: 83529-2-PBS. Standard: Ag35294. Range: 0.78-100 ng/mL.



Cytometric bead array standard curve of MP00501-3, SLC24A2 Recombinant Matched Antibody Pair, PBS Only. Capture antibody: 83529-3-PBS. Detection antibody: 83529-4-PBS. Standard: Ag35294. Range: 0.78-50 ng/mL.