

# LDHC Recombinant antibody

Catalog Number: 83526-3-RR

## Basic Information

**Catalog Number:**

83526-3-RR

**Size:**

1000 µg/ml

**Source:**

Rabbit

**Isotype:**

IgG

**GenBank Accession Number:**

NM\_002301

**GeneID (NCBI):**

3948

**UNIPROT ID:**

P07864

**Full Name:**

lactate dehydrogenase C

**Calculated MW:**

36 kDa

**Observed MW:**

30 kDa

**Purification Method:**

Protein A purification

**CloneNo.:**

240502E10

**Recommended Dilutions:**

WB 1:1000-1:4000

## Applications

**Tested Applications:**

WB, ELISA

**Species Specificity:**

Human

**Positive Controls:**

WB : HepG2 cells,

## Background Information

LDHC, also named as CT32 and LDH-X, belongs to the LDH/MDH superfamily and LDH family. LDHC is a possible role in sperm motility. LDHC catalyzes the reaction: (S)-lactate + NAD<sup>+</sup> = pyruvate + NADH. LDHC is a testis-specific isoform. Abnormal LDHC expression is associated with several forms of cancer. The antibody has no cross reaction with LDHA and LDHB.

## Storage

**Storage:**

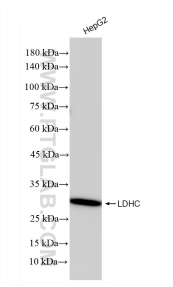
Store at -20°C. Stable for one year after shipment.

**Storage Buffer:**

PBS with 0.02% sodium azide and 50% glycerol pH 7.3.

Aliquoting is unnecessary for -20°C storage

## Selected Validation Data



HepG2 cells were subjected to SDS PAGE followed by western blot with 83526-3-RR (LDHC antibody) at dilution of 1:2000 incubated at room temperature for 1.5 hours.