

For Research Use Only

CEACAM1/CD66a Recombinant monoclonal antibody, PBS Only (Detector)

Catalog Number: 83524-6-PBS



Basic Information

Catalog Number: 83524-6-PBS	GenBank Accession Number: BC014473	Purification Method: Protein A purification
Source: Rabbit	GeneID (NCBI): 634	CloneNo.: 253148A11
Isotype: IgG	UNIPROT ID: P13688	
Immunogen Catalog Number: EG7064	Full Name: carcinoembryonic antigen-related cell adhesion molecule 1 (biliary glycoprotein)	
	Calculated MW: 526 aa, 58 kDa	

Applications

Tested Applications:
Cytometric bead array, Sandwich ELISA, Indirect ELISA

Species Specificity:
human

Background Information

Storage

Storage:
Store at -80°C.
The product is shipped with ice packs. Upon receipt, store it immediately at -80°C

Storage Buffer:
PBS only, pH7.3

For technical support and original validation data for this product please contact:

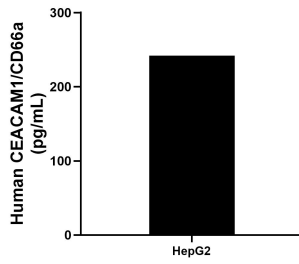
T: 4006900926

E: Proteintech-CN@ptglab.com

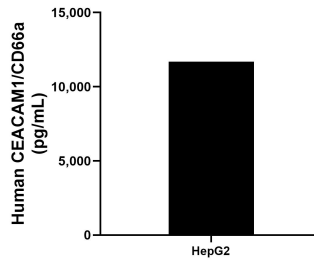
W: ptgcn.com

This product is exclusively available under Proteintech Group brand and is not available to purchase from any other manufacturer.

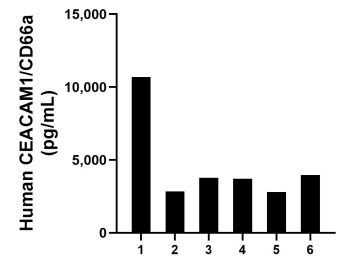
Selected Validation Data



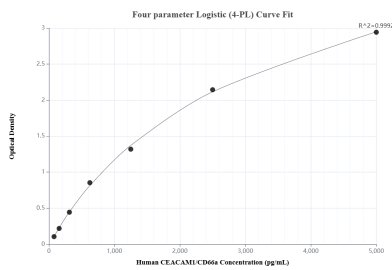
HepG2 (human hepatocellular carcinoma cells) were cultured in DMEM supplemented with 10% fetal bovine serum, 2.5 mM L-glutamine, 100 U/mL penicillin, and 100 µg/mL streptomycin sulfate. An aliquot of the cell culture supernate was removed, assayed for human CEACAM1/CD66a, and measured 241.8 pg/mL.



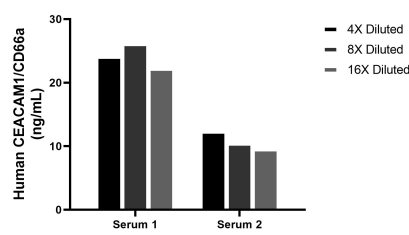
The mean CEACAM1/CD66a concentration was determined to be 11,693.8 pg/mL in HepG2 cell extract based on a 1.5 mg/mL extract load.



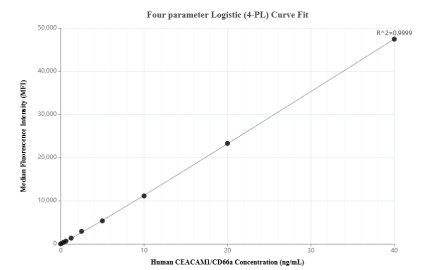
Plasma of six individual healthy human donors was measured. The human CEACAM1/CD66a concentration of detected samples was determined to be 4,624.2 ng/mL with a range of 2,787.3 - 10,691.2 pg/mL.



Sandwich ELISA standard curve of MP00520-5, Human CEACAM1/CD66a Recombinant Matched Antibody Pair - PBS only. 83524-9-PBS was coated to a plate as the capture antibody and incubated with serial dilutions of standard Eg7064. 83524-6-PBS was HRP conjugated as the detection antibody. Range: 78.1-5000 pg/mL



The mean CEACAM1/CD66a concentration was determined to be 24.1 ng/mL in human serum 1, 10.8 ng/mL in human serum 2.



Cytometric bead array standard curve of MP00520-4, CEACAM1/CD66a Recombinant Matched Antibody Pair, PBS Only. Capture antibody: 83524-7-PBS. Detection antibody: 83524-6-PBS. Standard: Eg7064. Range: 0.312-40 ng/mL