

For Research Use Only

PSMD1 Recombinant antibody, PBS Only (Detector)

Catalog Number: 83521-5-PBS



Basic Information

| | | | | | |
|---------------------------|-------------|----------------------------|---------------------------------|----------------------|------------------------|
| Catalog Number: | 83521-5-PBS | GenBank Accession Number: | BC094720 | Purification Method: | Protein A purification |
| Size: | 1 mg/ml | GeneID (NCBI): | 5707 | CloneNo.: | 240458C4 |
| Source: | Rabbit | UNIPROT ID: | Q99460 | | |
| Isotype: | IgG | Full Name: | proteasome (prosome, macropain) | | |
| Immunogen Catalog Number: | AG12009 | 26S subunit, non-ATPase, 1 | | | |
| | | Calculated MW: | 953 aa, 106 kDa | | |

Applications

Tested Applications:
Sandwich ELISA, Indirect ELISA, Sample test

Species Specificity:
human

Background Information

Storage

Storage:
Store at -80°C.
The product is shipped with ice packs. Upon receipt, store it immediately at -80°C

Storage Buffer:
PBS Only

For technical support and original validation data for this product please contact:

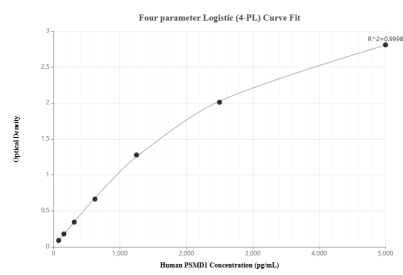
T: 4006900926

E: Proteintech-CN@ptglab.com

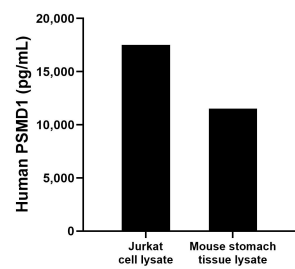
W: ptgcn.com

This product is exclusively available under Proteintech Group brand and is not available to purchase from any other manufacturer.

Selected Validation Data



Sandwich ELISA standard curve of MP00519-3, Human PSMD1 Recombinant Matched Antibody Pair - PBS only. 83521-2-PBS was coated to a plate as the capture antibody and incubated with serial dilutions of standard Ag12009. 83521-5-PBS was HRP conjugated as the detection antibody. Range: 78.1-5000 pg/mL



Mouse stomach tissue lysate and Jurkat cell lysate were measured. The human PSMD1 concentration of detected samples was determined to be 11,510.8 pg/mL in mouse stomach lysate (based on a 4.0 mg/mL extract load) and 17,515.2 pg/mL in Jurkat cell lysate (based on a 3.4 mg/mL extract load).