

For Research Use Only

# PSMD1 Recombinant antibody, PBS Only (Detector)

Catalog Number: 83521-4-PBS



## Basic Information

Catalog Number: 83521-4-PBS	GenBank Accession Number: BC094720	Purification Method: Protein A purification
Size: 1 mg/ml	GeneID (NCBI): 5707	CloneNo.: 240458C9
Source: Rabbit	UNIPROT ID: Q99460	
Isotype: IgG	Full Name: proteasome (prosome, macropain) 26S subunit, non-ATPase, 1	
Immunogen Catalog Number: AG12009	Calculated MW: 953 aa, 106 kDa	
	Observed MW: 106 kDa	

## Applications

**Tested Applications:**  
WB, IHC, IF/ICC, FC (Intra), Cytometric bead array,  
Indirect ELISA

**Species Specificity:**  
human, mouse, rat

## Background Information

PSMD1 is a component of the 26S proteasome and contributes to its function regulation. PSMD1 performs an important role in the regulation of numerous cellular processes through the degradation of proteins targeted for breakdown through ubiquitin. PSMD1 has been found to be closely related to a variety of cancers such as lung adenocarcinoma and breast cancer.

## Storage

**Storage:**  
Store at -80°C.  
**The product is shipped with ice packs. Upon receipt, store it immediately at -80°C**

**Storage Buffer:**  
PBS Only

For technical support and original validation data for this product please contact:

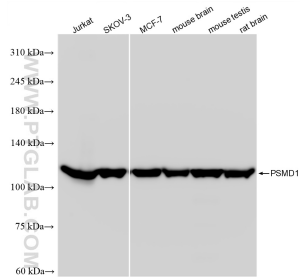
T: 4006900926

E: [Proteintech-CN@ptglab.com](mailto:Proteintech-CN@ptglab.com)

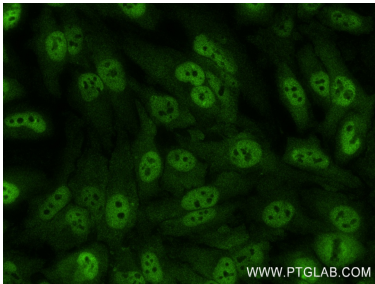
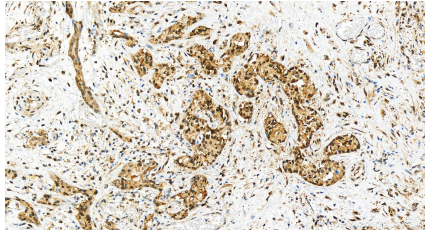
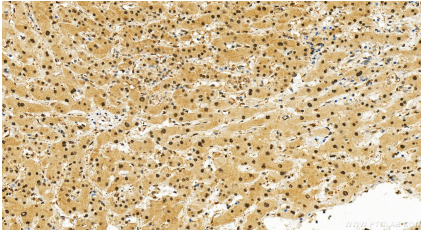
W: [ptgcn.com](http://ptgcn.com)

**This product is exclusively available under Proteintech Group brand and is not available to purchase from any other manufacturer.**

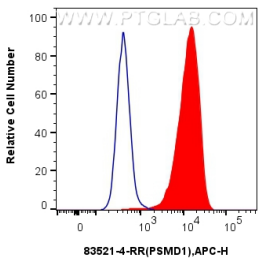
Selected Validation Data



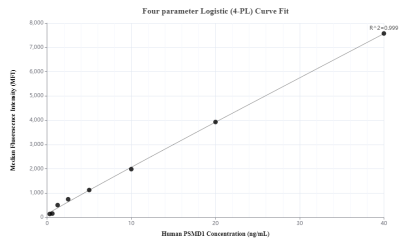
Various lysates were subjected to SDS PAGE followed by western blot with 83521-4-RR (PSMD1 antibody) at dilution of 1:10000 incubated at room temperature for 1.5 hours. This data was developed using the same antibody clone with 83521-4-PBS in a different storage buffer formulation.



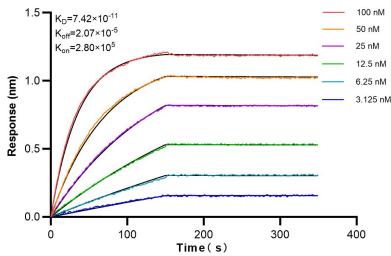
Immunofluorescent analysis of (4% PFA) fixed HeLa cells using PSMD1 antibody (83521-4-RR, Clone: 240458C9) at dilution of 1:300 and CoraLite®488-Conjugated AffiniPure Goat Anti-Rabbit IgG(H+L) (SA00013-2). This data was developed using the same antibody clone with 83521-4-PBS in a different storage buffer formulation.



1x10<sup>6</sup> MCF-7 cells were intracellularly stained with 0.25 ug PSMD1 Recombinant antibody (83521-4-RR, Clone:240458C9) and APC-Conjugated AffiniPure Goat Anti-Rabbit IgG(H+L)(red), or 0.25 ug Isotype Control (blue). Cells were fixed and permeabilized with Transcription Factor Staining Buffer Kit (PF00011). This data was developed using the same antibody clone with 83521-4-PBS in a different storage buffer formulation.



Cytometric bead array standard curve of MP00519-2, PSMD1 Recombinant Matched Antibody Pair, PBS Only. Capture antibody: 83521-3-PBS. Detection antibody: 83521-4-PBS. Standard: Ag12009. Range: 0.313-40 ng/mL.



Biolayer interferometry (BLI) kinetic assays of 83521-4-RR against Human PSMD1 were performed. The affinity constant is 74.2 pM.